



Pathology at a Glance

Department of Pathology & Laboratory Medicine
Faculty of Medicine
University of British Columbia

2004-2005

Pathology at a Glance

Contents

ORGANIZATION

Org Chart	3
Faculty and Staff	4
Geographic Sites.	10
Assignable Space	13

EDUCATION

Undergraduate Studies	15
BMLSC	16
Basic Science Undergraduate Course.	17
Graduate Studies	18
Residency Program	19
Continuing Professional Development.	20

RESEARCH

Research Awards by Source.	23
Personnel Awards	24
Publications.	25

REVENUES & BUDGET

Revenues & Budget	26
-----------------------------	----

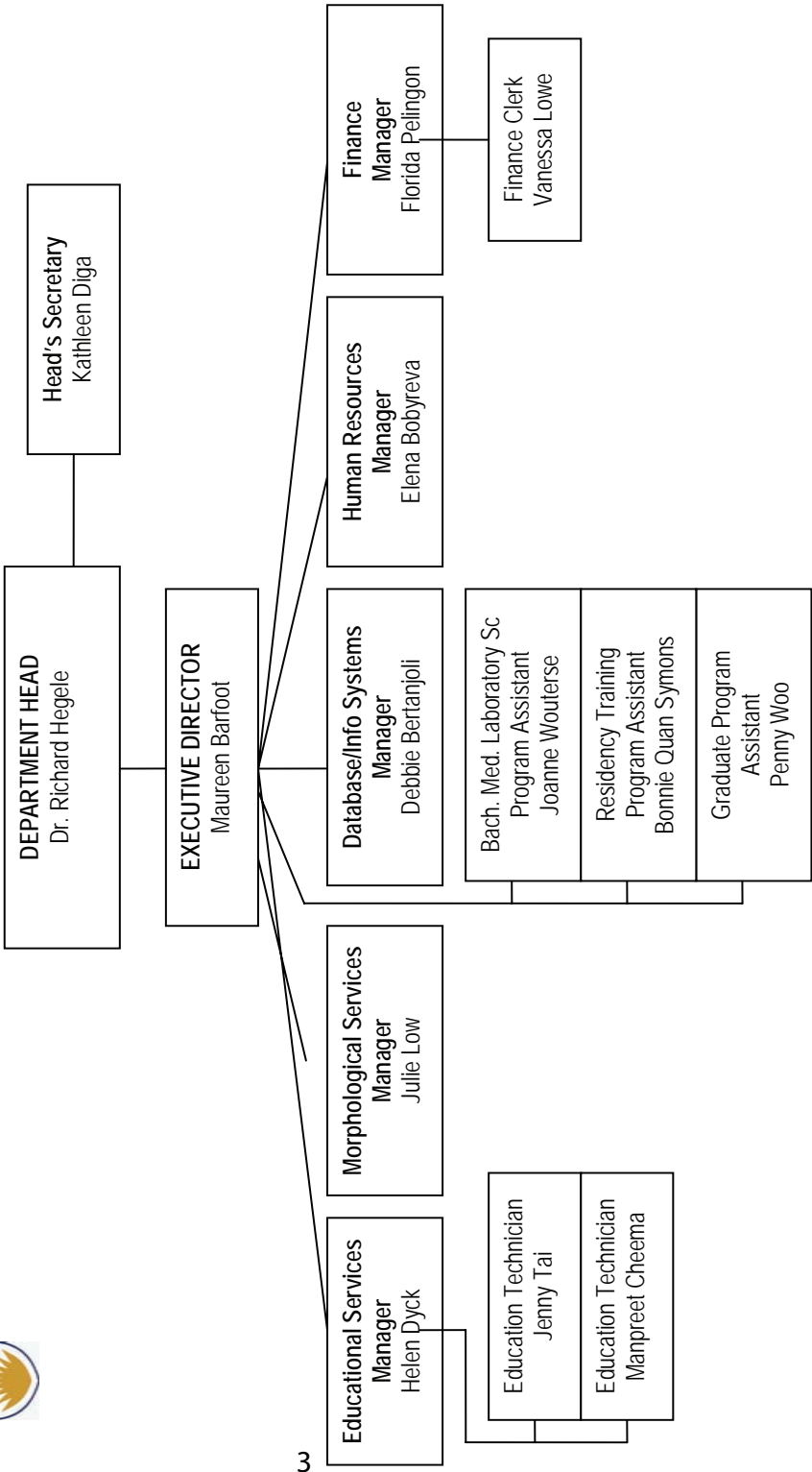
SECTION I

ORGANIZATION



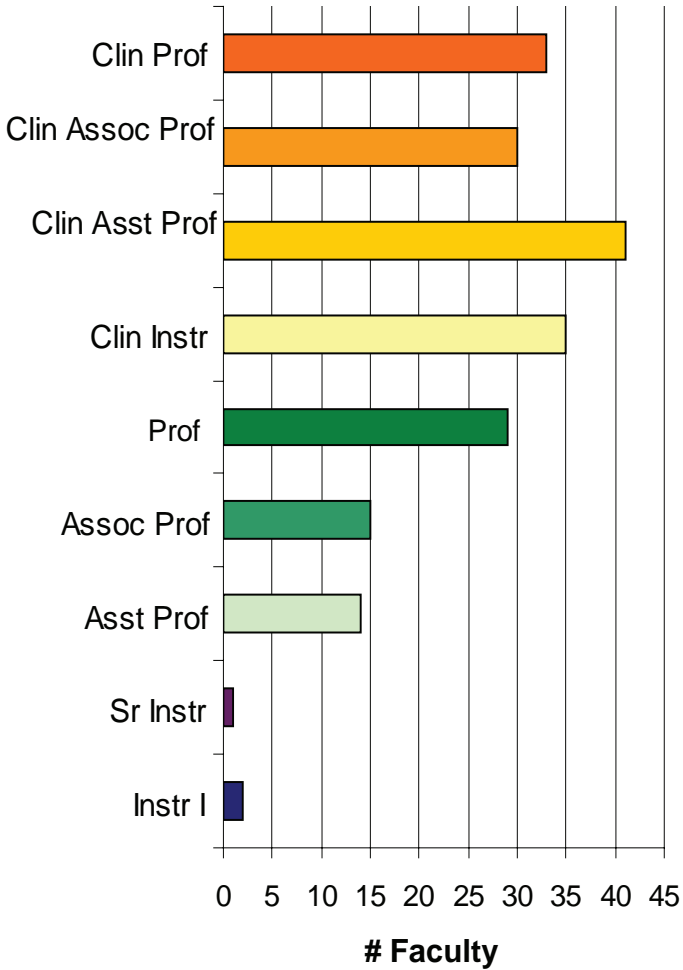


THE UNIVERSITY OF BRITISH COLUMBIA
DEPARTMENT OF PATHOLOGY AND LABORATORY MEDICINE



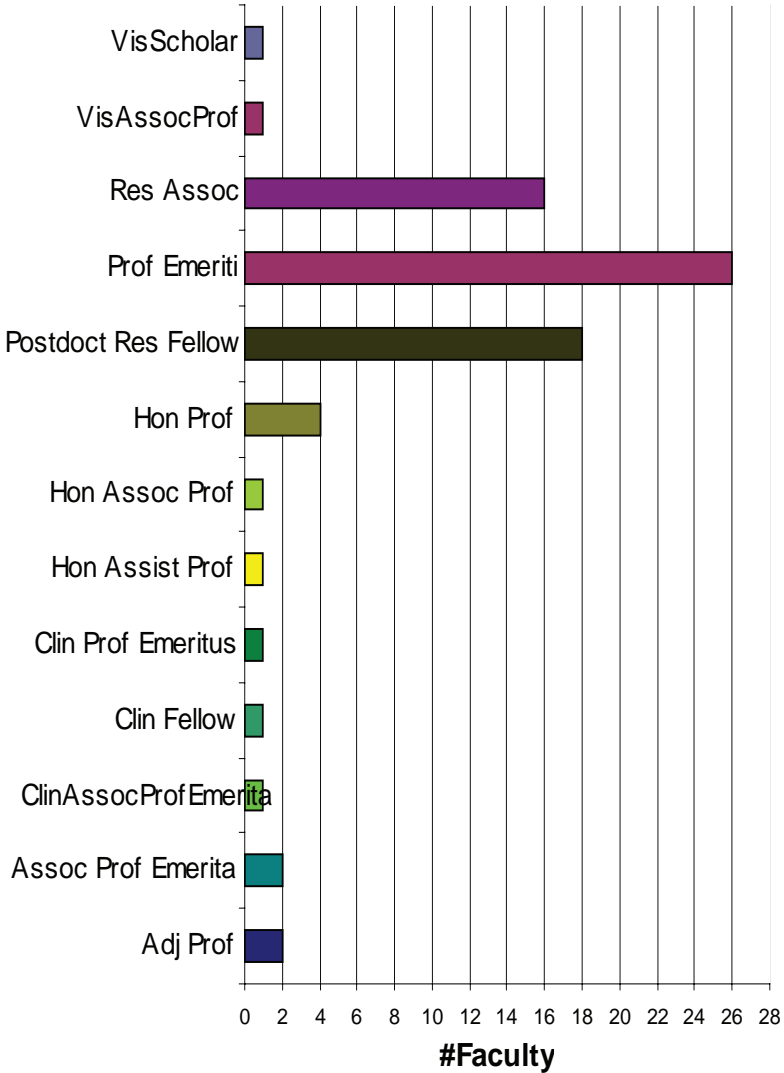
Faculty

Total: 200



Faculty

Total: 75



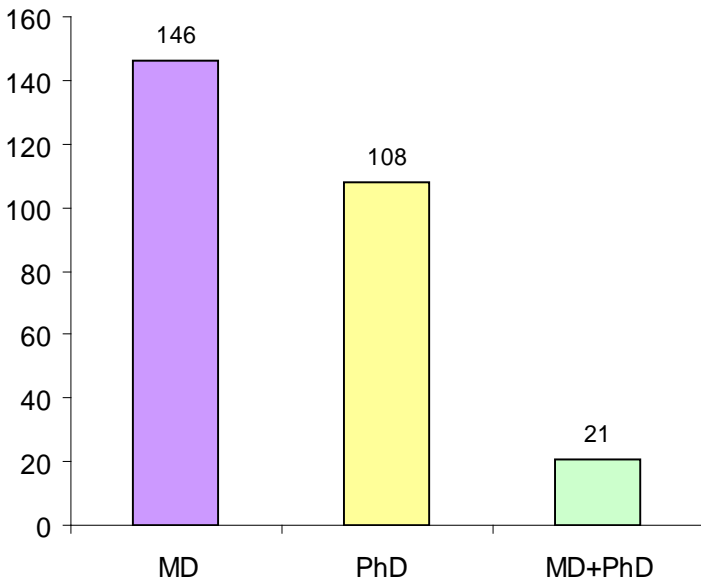
Tenure and Grant Tenure

# of tenure-track faculty	3
# of grant tenure-track faculty	11
# of tenured faculty	10
# of grant-tenured faculty	49
Total	73

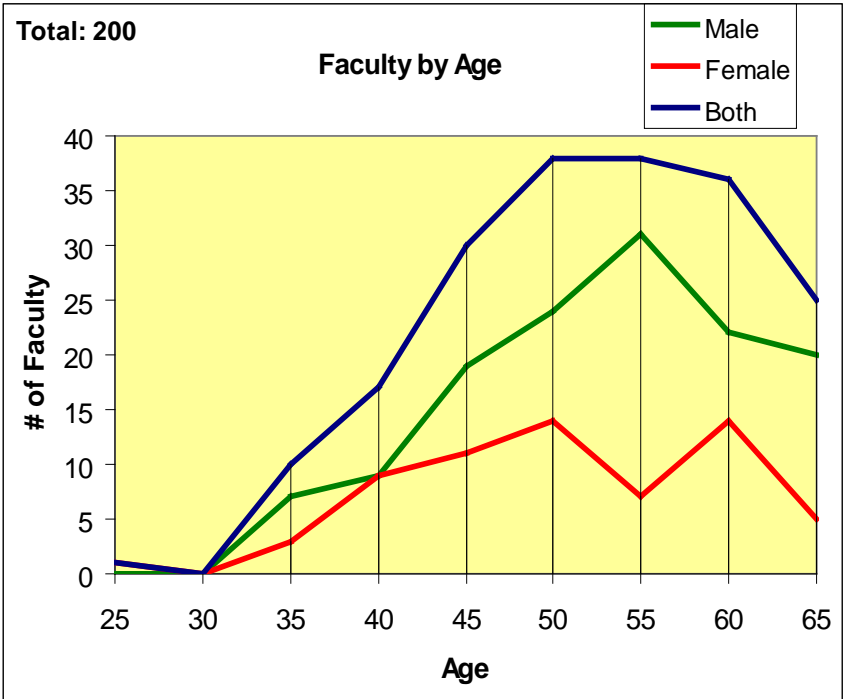
Degrees: MD & PhD

Total: 275

Degrees: MD & PhD



Faculty by Age



Employee Groups

Faculty with Review (Clinical Faculty)	138
Faculty with Review (Academic Faculty)	62
Secretarial/Clerical (CUPE 2950)	9
Management/Professional	18
Non-Union Technician & Research Assistants	78

UBC Teaching Hospital

- a) Vancouver Coastal Health, Vancouver Acute Health Services, UBC Hospital
- b) Vancouver Coastal Health, Vancouver Acute Health Services, Vancouver General Hospital
- c) Providence Health Care, St. Paul's Hospital
- d) Children's & Women's Health Centre of British Columbia (C&W)
- e) BC Cancer Agency (BCCA)
- f) British Columbia Centre for Disease Control (BCCDC)
- g) Royal Jubilee Hospital Victoria
- h) Victoria General Hospital
- i) Prince George Regional Hospital
- j) Royal Columbian Hospital

Affiliation with UBC Research Institutes & Centres

A) Providence Health Care Research Institute

- i) BC Centre Of Excellence For HIV/AIDS
- ii) James Hogg iCAPTURE Centre For Cardiovascular And Pulmonary Research
- iii) Healthy Heart Program / Lipid Clinic
- iv) Centre For Health Evaluation And Outcome Sciences

B) BC Cancer Research Centre

- i) Advanced Therapeutics
- ii) Cancer Control Research
- iii) Cancer Endocrinology
- iv) Cancer Genetics
- v) Developmental Biology
- vi) Cancer Imaging
- vii) BC Cancer Agency's Trev & Joyce Deeley Research Centre
- viii) BC Cancer Agency's Michael Smith Genome Sciences Centre
- ix) Medical Biophysics
- x) Molecular Oncology and Breast Cancer Program
- xi) Terry Fox Laboratory
- xii) Tumour Tissue Repository
- xiii) Prostate Cancer Research Program

C) British Columbia Centre for Disease Control (BCCDC)

- i) UBC Centre for Disease Control

D) Vancouver Coastal Health Research Institute

- i) Jack Bell Research Centre - Hosts collaboration GPEC group
- ii) Skin Care Centre
- iii) Arthritis Centre
- iv) Eye Care Centre
- v) The Prostate Centre
- vi) Clinical Microbiology Proficiency Testing Program (CMPT)
- vii) BRAIN Research Centre
- viii) International Science of Soft Surfaces & Interfaces Project
- ix) Centre for Blood Research
- x) CFI Laboratory for Molecular Biophysics

E) Child & Family Research Institute (CFRI)

- i) Centre for Microbial Diseases & Host Defense Research
- ii) Centre for Molecular Medicine and Therapeutics (CMMT)
- iii) Centre for Nutrition Research
- iv) Centre for Growth and Development
- v) Centre For Community Health And Health Evaluation
- vi) Centre For Community Child Health Research
- vii) BC Injury Research And Prevention Unit
- viii) Clinical Research Support

Assignable Space (sq ft)

Department Assignable Space (sq ft)				
Site	Office	Wet Lab	Other	Total
C & W	1375.85	4183.75	1589.24	7148.84
St. Paul's Hospital	1846.60	290.60	1951.10	4088.30
UBC Hospital	3002.09	6518.30	4989.56	14509.95
VGH	1222.19	3064.66	4081.35	8368.20
Total	7446.73	14057.31	12611.25	34115.29

SECTION II

EDUCATION



Medical Undergraduate Pathology Teaching

	Pathology Faculty	Hours	Total Students
1st & 2nd yr. PBL/DPAS	29	1561	504
1st & 2nd year lectures	42	85	
1st & 2nd year small lab/group sessions	60	454	
Electives and selectives		N/A	26
Total			530

Bachelor of Medical Laboratory Science Program

Number of Students	33
BMLSc program courses	14
BMLSc Course Credits signed up for in 2005	1040
Instructors (Faculty, technologists, others)	71
Lecture hours	650
Other types of Instruction - hours	244

Basic Science Undergraduate Course

Course	# of credits	# of students
Path375 –Intro Pathology	3	125
Path 417- Bacterial infections	3	25
Path 437 - Virology	3	25
Total	9	175

Graduate Studies

Program of study	Students
Masters	35
PhD	58
MD/PhD	4
Total	97
# of supervisors	52

Residency Program

Program	Residents
Anatomic Path/ General Path	16
Clinical Biochemistry	2
Medical Microbiology	3
Hematopathology	4
Neuropathology	1
PGY1	5
Total	31
Clinical Fellows	1

4 residents are externally funded

Continuing Professional Development

Program	# of participants
Continuing Medical Education (Practical Pathology at Whistler)	75
Laboratory Quality Control	25
Infection Control Certificate	45
Total	145

Departmental Educational Events Program

Special Yearly events:

Practical Pathology at Whistler

Pathology Day

Lecture series:

Distinguished Lecture Series

Gross to Nano

Academic Half Day

SECTION III

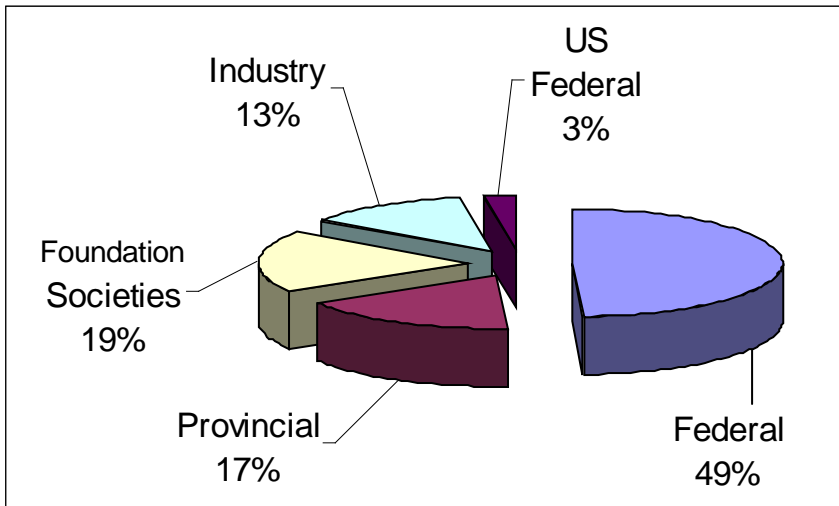
RESEARCH



Research Awards Funding Sources F/Y 2004-2005

Funding administered by UBC Office of Research Services

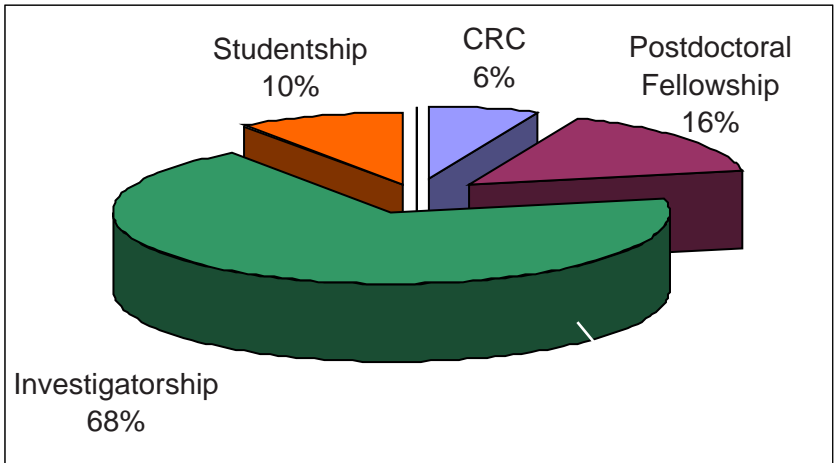
Research Awards Funding Sources (\$)	
Federal	\$12,386,922
Provincial	\$4,367,475
Foundation/Societies	\$4,614,516
Industry	\$3,231,749
US Federal	\$633,558
Total	\$25,234,220



Personnel Awards F/Y 2004-2005

Funding administered by UBC Office of Research Services

Personnel Awards (\$)	
CRC	\$125,000
Postdoctoral Fellowship	\$302,128
Investigatorship	\$1,325,667
Studentship	\$190,575
Total	\$1,943,370



Publications 2004-2005

Published Work	
Refereed Publications:	220
<i>journals</i>	164
<i>conference proceedings</i>	56
Non-Refereed Publications:	42
<i>journals</i>	3
<i>conference proceedings</i>	39
Books:	15
<i>edited</i>	2
<i>chapters</i>	13
Patents:	2
Other Works:	62
<i>conference proceedings</i>	26
<i>abstracts</i>	36
Work Submitted:	38
Work in Progress:	7

SECTION IV

REVENUES & BUDGET



Department Operating Funds F/Y 2004-2005

Operating Funds (\$)	
GPOF	\$2,333,587
Fee for Service	\$11,597,615
Specific Purpose Funds	\$460,855
Endowment	\$236,765
Research	\$25,234,220
Total	\$39,863,042



G227 - 2211 Wesbrook Mall

Vancouver, BC V6T 2B5

tel 604-822-7102; fax 604-822-9703

www.pathology.ubc.ca