



pathology at a glance



2007 - 2008

Department of Pathology & Laboratory Medicine
Faculty of Medicine
University of British Columbia



Contents

ORGANIZATION

A Message from the Head	5
Org Chart.	7
Faculty and Staff	8
Geographic Sites	14
Assignable Space	19

EDUCATION

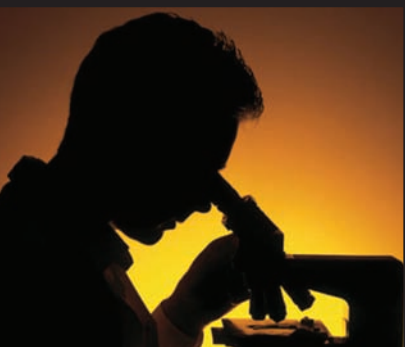
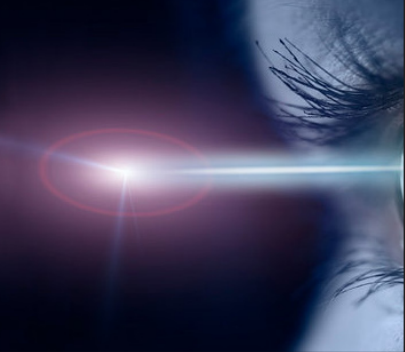
Undergraduate Studies	21
BMLSc	22
Basic Science Undergraduate Course	23
Graduate Studies	24
Residency Program.	25
Continuing Professional Development	26

RESEARCH

Research Awards by Source	29
Personnel Awards.	30
Publications	31

REVENUES & BUDGET

Revenues & Budget.	33
----------------------------	----



A Message from The Head

Richard Hegele, MD, FRCPC, PhD

The UBC Department of Pathology and Laboratory Medicine is a fertile ground for knowledge creation, translation and transmission, owing to its cadre of talented faculty, staff, students and trainees, and remarkable ability to successfully leverage considerable external support.

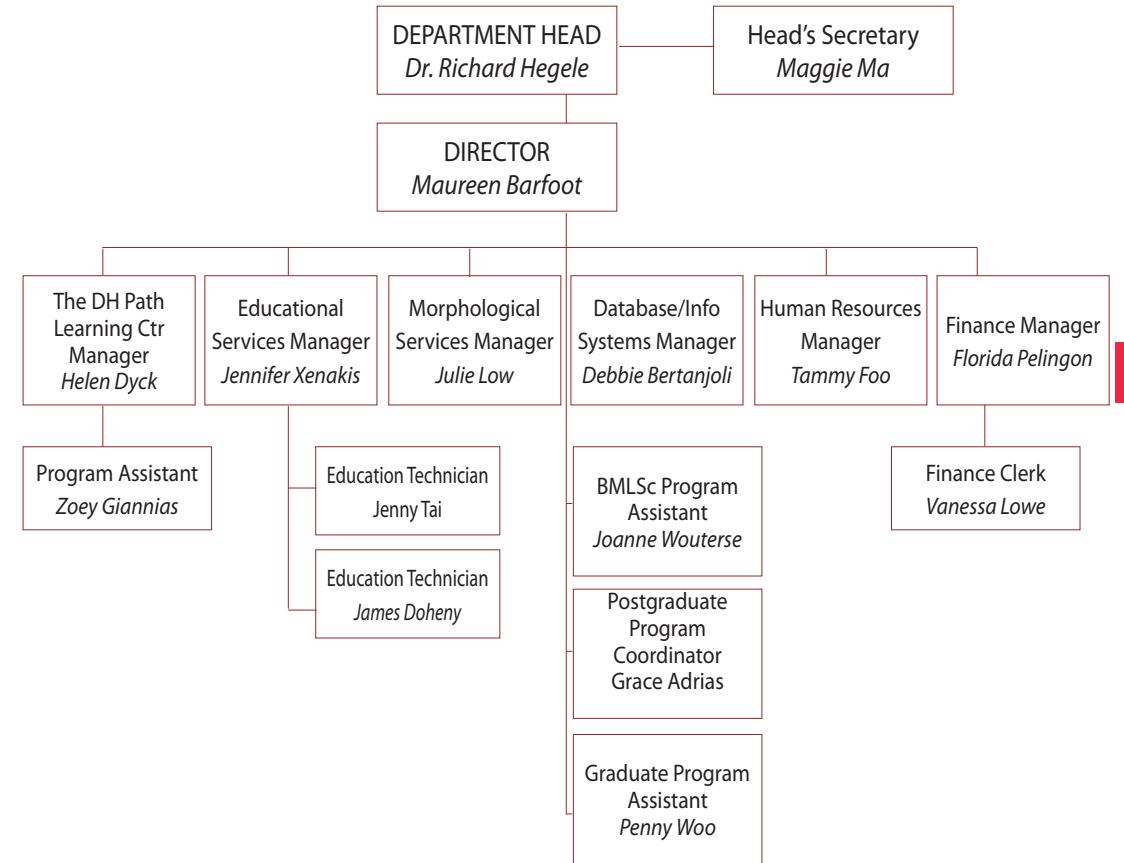
Our acclaimed Bachelor of Medical Laboratory Science (BMLSc) program is fully subscribed; Graduate Studies is flourishing on campus and in the various affiliated sites; Professional Programs (Medical and Dental undergraduate, allied health professions) benefit from a high visibility presence in their various curricula; accredited Residency Training Programs in each of the disciplines of Pathology and Laboratory Medicine are fully approved by the Royal College of Physicians and Surgeons of Canada; Continuing Education (Professional Development/Knowledge Translation) and Certificate programs continue to evolve, and the research portfolio continues to be a powerhouse within the UBC system.

This brief synopsis is both a reflection and endorsement of the Department's diversity and productivity, resilience and ability to adapt in the face of an ever-changing landscape, and commitment to outstanding performance. There is much for which to be proud and the future looks bright indeed. Congratulations to all: for me personally, it is a privilege to be part of such a dynamic and energetic enterprise.

1 ORGANIZATION

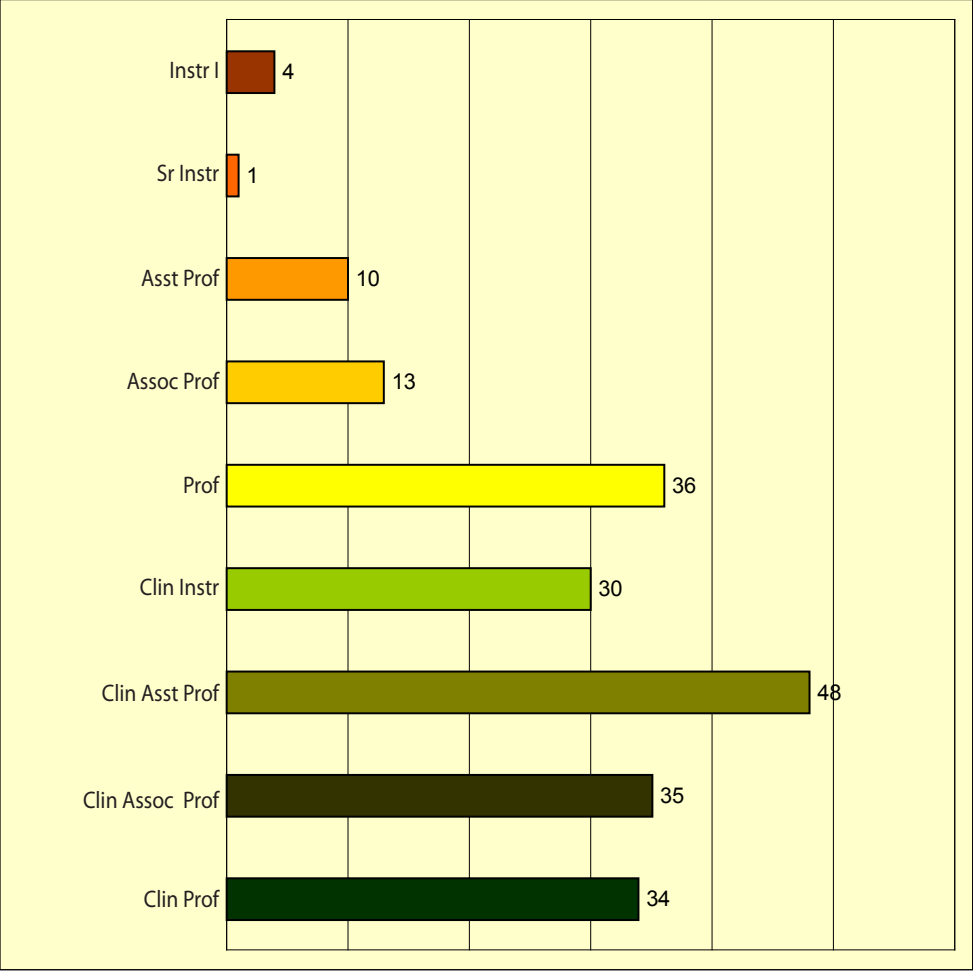
Section I

THE UNIVERSITY OF BRITISH COLUMBIA DEPARTMENT OF PATHOLOGY & LABORATORY MEDICINE



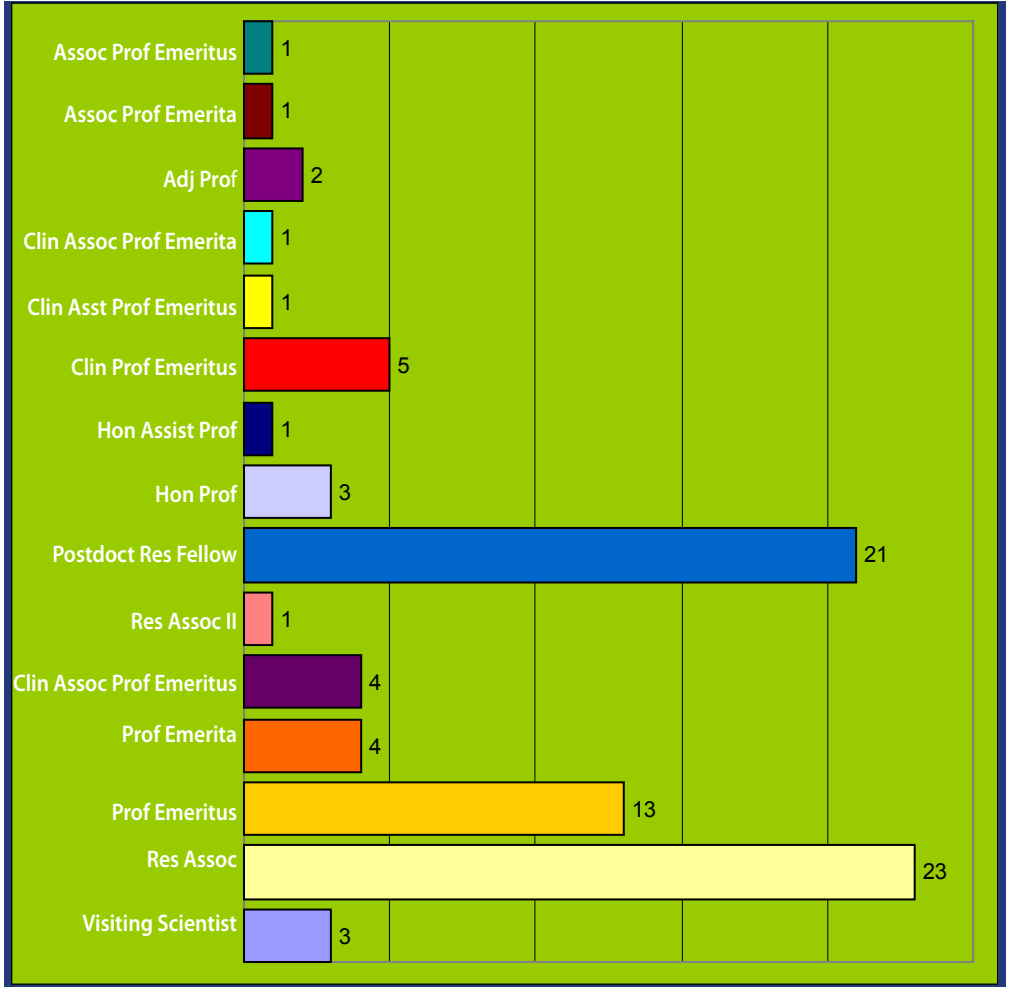
Faculty

•TOTAL: 211



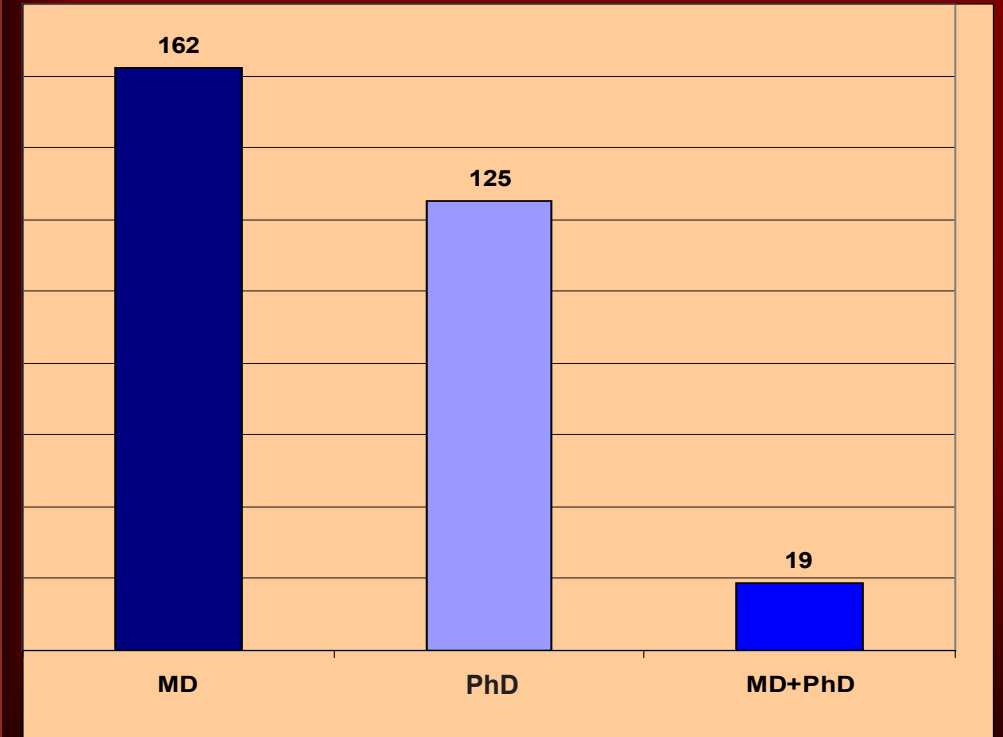
Faculty

•TOTAL: 84

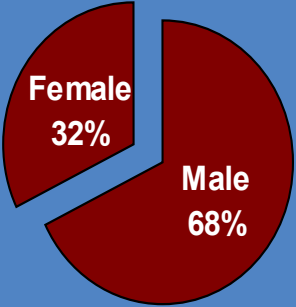
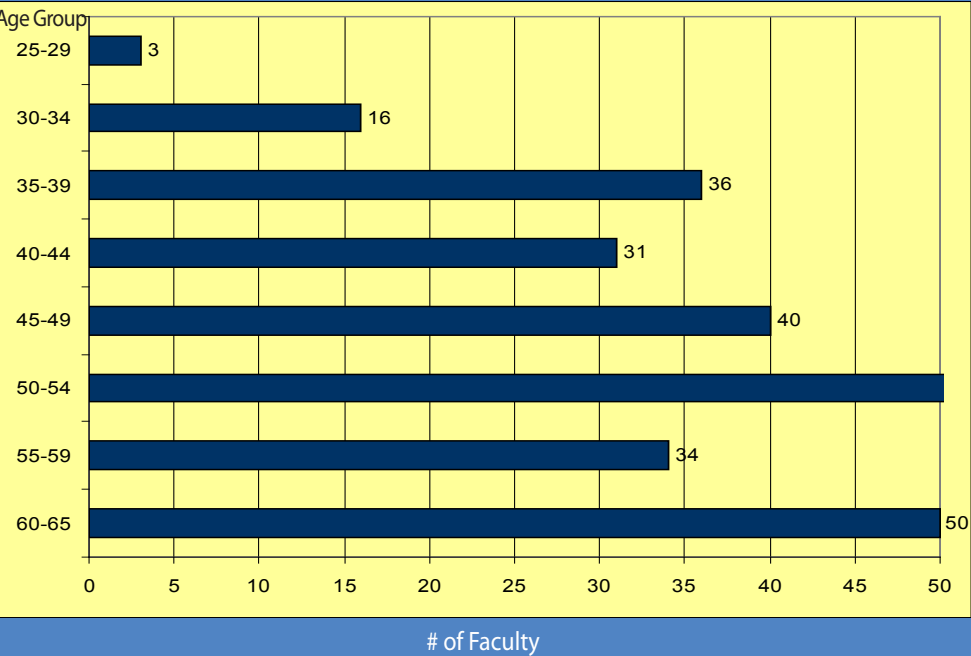




Degrees: MD & PhD



Faculty by Age



Employee Groups

Clinical Faculty	158
Academic Faculty	64
Postdoctoral Research Fellows, Research Associates & visitors	73
Secreterial/Clerical (CUPE 2950)	8
Management/Professional	15
Non-Union Technician & Research Assistants	58
Non-Union (Co-op Students)	17

Geographic Sites

UBC Teaching Hospitals

- a) BC Children's Hospital
- b) BC Women's Hospital
- c) Lion's Gate Hospital
- d) Prince George General Hospital
- e) Richmond General Hospital
- f) Royal Columbian Hospital
- g) Royal Jubilee Hospital
- h) St. Paul's Hospital
- i) Sunny Hill Health Centre for Children
- j) UBC Hospital & Urgent Care Centre
- k) Vancouver General Hospital
- l) Victoria General Hospital

14

Affiliation with UBC Research Institutes & Centres

A) Providence Health Care Research Institute

- i) BC Centre Of Excellence For HIV/AIDS
- ii) James Hogg iCAPTURE Centre For Cardiovascular And Pulmonary Research
- iii) Healthy Heart Program / Lipid Clinic
- iv) Centre For Health Evaluation And Outcome Sciences

B) BC Cancer Research Centre

- i) Advanced Therapeutics
- ii) Cancer Control Research
- iii) Cancer Endocrinology
- iv) Cancer Genetics
- v) Developmental Biology
- vi) Cancer Imaging
- vii) BC Cancer Agency's Trev & Joyce Deeley Research Centre

15

viii) BC Cancer Agency's Michael Smith Genome Sciences Centre

ix) Medical Biophysics

x) Molecular Oncology and Breast Cancer Program

xi) Terry Fox Laboratory

xii) Tumour Tissue Repository

xiii) Prostate Cancer Research Program

C) British Columbia Centre for Disease Control (BCCDC)

i) UBC Centre for Disease Control

D) Vancouver Coastal Health Research Institute

i) Jack Bell Research Centre - Hosts collaboration GPEC group

ii) Skin Care Centre

iii) Arthritis Centre

iv) Eye Care Centre

v) The Prostate Centre

vi) Clinical Microbiology Proficiency Testing Program (CMPT)

vii) BRAIN Research Centre

viii) International Science of Soft Surfaces & Interfaces Project

ix) Centre for Blood Research

x) CFI Laboratory for Molecular Biophysics

E) Child & Family Research Institute (CFRI)

i) Centre for Microbial Diseases & Host Defense Research

ii) Centre for Molecular Medicine and Therapeutics (CMMT)

iii) Centre for Nutrition Research

iv) Centre for Growth and Development

v) Centre For Community Health And Health Evaluation

vi) Centre For Community Child Health Research

vii) BC Injury Research And Prevention Unit

viii) Clinical Research Support



Assignable Space (sq ft)

Department Assignable Space (sq ft)				
Site	Office	Wet Lab	Other	Total
C & W	1375.85	4183.75	1589.24	7148.84
St. Paul's Hospital	1846.60	290.60	1951.10	4088.30
UBC Hospital	3002.09	6518.30	4989.56	14509.95
VGH	1222.19	3064.66	4081.35	8368.20
Total	7446.73	14057.31	12611.25	34115.29

2

EDUCATION

Section 2

Medical Undergraduate Pathology Teaching

	# of Instructors	# of Hours	# of Students
Lectures	42	70	542
CPC- Large Group	23	63	542
CPC – small group	45	197	542
PBL/DPAS	23	176	542
Electives and selectives	N/A	N/A	25

Bachelor of Medical Laboratory Science Program

Number of Students	46
BMLSc program courses	14
Instructors (Faculty, technologists, others)	63
Lecture hours	679
Other types of Instruction - hours	244

22

Basic Science Undergraduate Course

Course	# of credits	# of students
Path 375 –Intro Pathology	3	130
Path 417- Bacterial infections	3	20
Path437/Micb407	3	22
Path 427 - Basic Principles of Infec- tion Control	3	40
Path 451 - Clerkship in Laboratory Medicine and Infection Prevention and Control	3	6
Path 467 - Basic Microbiology for Infection Control	3	21
Path 477 - Basic Epidemiology for Infection Control	3	15
Total	21	254

23

Graduate Studies

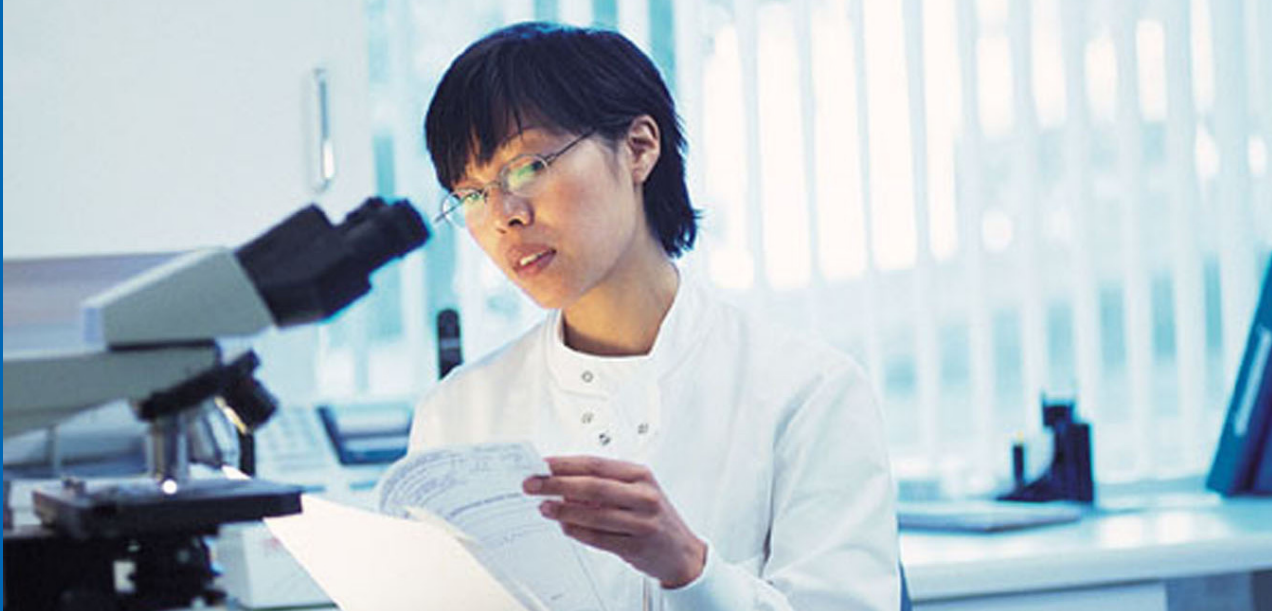
Program of study	Students
Masters	31
PhD	54
MD/PhD	3
Total	88
# of supervisors	62



Residency Program

Program	Residents
Anatomic Path/ General Path	19
Clinical Biochemistry	2
Medical Microbiology	4
Hematopathology	6
Neuropathology	0
PGY1	5
Transfusion Medicine	1
Total	37
Clinical Fellows	0

9 residents are externally funded



Continuing Professional Development

Program	# of participants
Continuing Medical Education (Practical Pathology at Whistler)	78
Laboratory Quality Control	23
Infection Control Certificate	85
Total	186

Special Yearly Event Pathology Day 2007

Keynote speakers:

The James Hogg Keynote Lecturer was Dr. Polly Matzinger, Head, T-Cell Tolerance and Memory Section Senior Investigator, National Institute of Allergy and Infectious Diseases, Bethesda, MD. Dr. Matzinger presented a talk entitled “Conversations Between Tissues and T cells” to an engaging audience. Over 150 people attended this presentation.

oral presentations by residents/trainees and graduate students	12
# of posters	72

Awards for Best Oral Presentations:

Residents: Suzanne Vercauteren

“Stem Cell Cultures as a Diagnostic Tool in Myelodysplastic Syndromes” Undergrad/

Grad students: Jerry Wong

“ClassIII PI3K is required for intracellular shuttling of coxsackievirus”

Awards for Best Poster Presentations:

Leah M. Prentice

Faculty Recognition and Awards:

Excellence in Education Award: Dr. Kate Chipperfield

Award for Excellence in Service: Dr. David Owen

Excellence in Research and Discovery: Dr. Ian Mackenzie

Lifetime Achievement Award: Dr. Jiri Frohlich

Most Valuable Player Award: Dr. David Walker

The Staff Service Award for Excellence: Mr. Andrew Leung

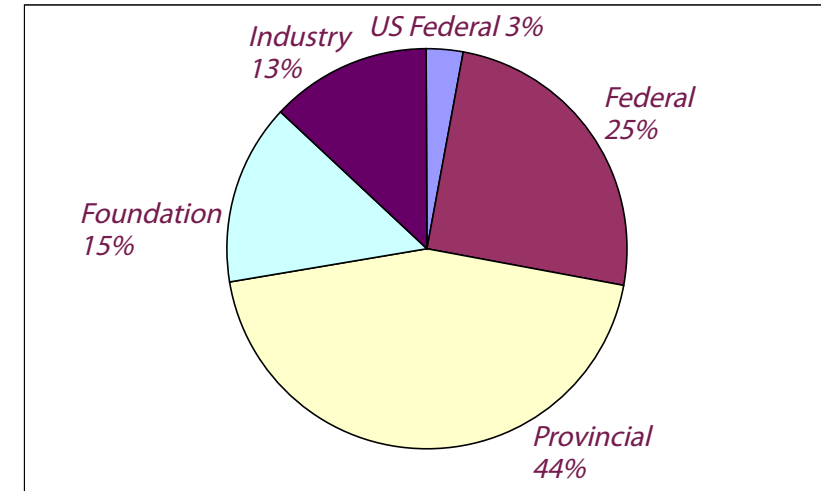
3

RESEARCH

Section 3

Research Grant Funding Sources F / Y 2007-2008

Research Awards Funding Sources (\$)	
Federal	\$5,351,196.60
Provincial	\$9,501,369.24
Foundation	\$3,172,452.00
Industry	\$2,786,297.00
US Federal	\$666,204.40
Total	\$21,477,519.24

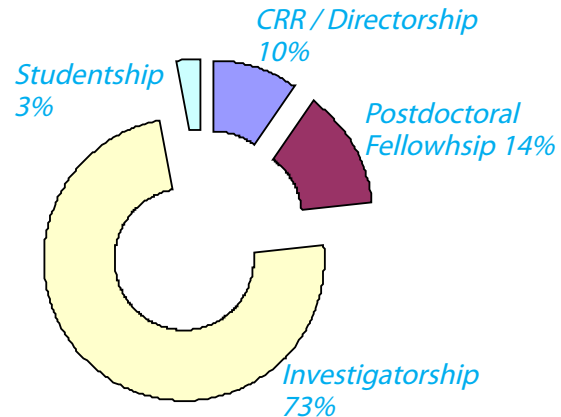


Personnel Awards

2007-2008

Personnel Awards (\$)	
CRC/Directorship	\$215,000.00
Postdoctoral Fellowship	\$296,833.00
Investigatorship	\$1,610,555.00
Studentship	\$63,218.00
Total	\$2,185,606.00

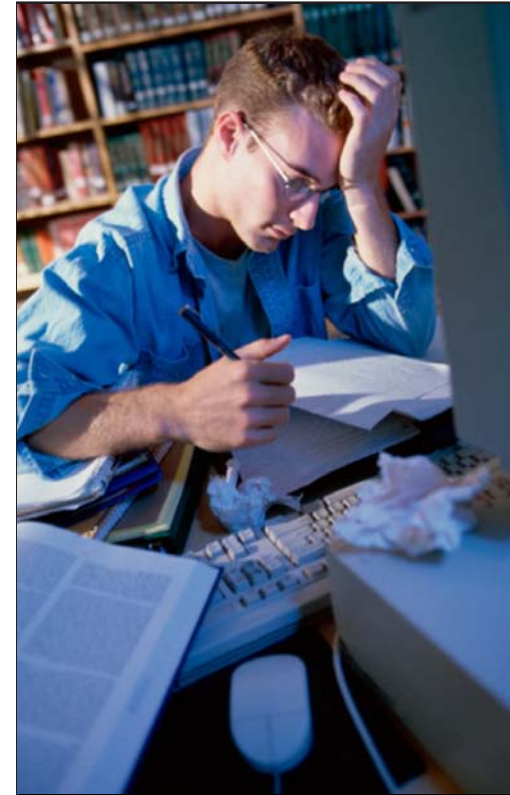
Funding administered by UBC Office of Research Services



Publications

2007-2008

Published Work	
Refereed/Non-refereed Publications	376
Conference Proceedings/ Abstracts	169
Books	36
authored	2
chapters	34
Patents	14



4

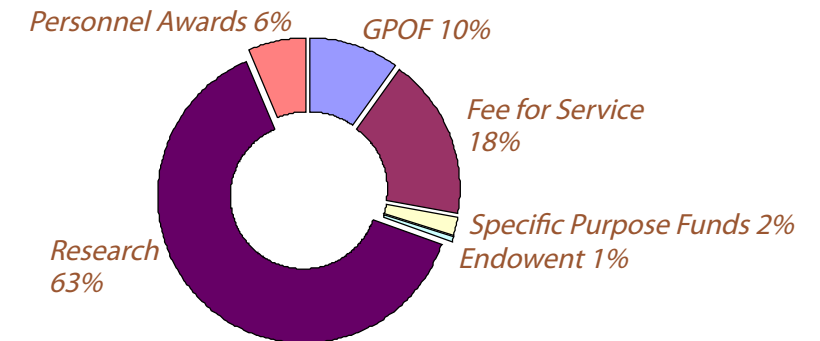
REVENUES & BUDGET

Section 4

Department Funds

2007-2008

Funds (\$)	
GPOF	\$3,391,990.00
Fee for Service	\$5,997,228.91
Specific Purpose Funds	\$701,202.03
Endowment	\$208,190.00
Research	\$21,477,519.24
Personnel Awards	\$2,185,606.00
Total	\$33,961,736.18



NOTES:



G227 - 2211 Wesbrook Mall
Vancouver, BC V6T 2B5
tel 604-822-7102; fax 604-822-9703
www.pathology.ubc.ca