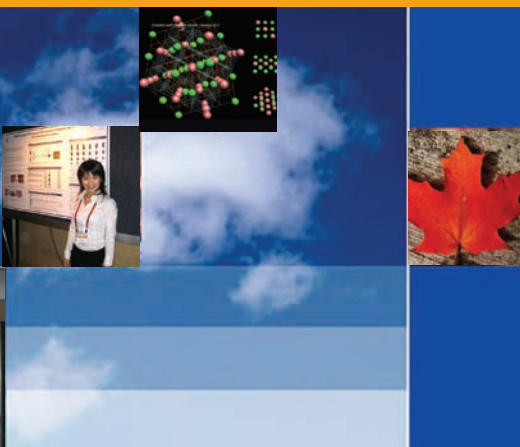


pathology at a glance



2008 - 2009



Content

ORGANIZATION

A Message from the Head	4
Org Chart	9
Faculty and Staff	10
Geographic Sites	15
Assignable Space	20

EDUCATION

Undergraduate Studies	22
BMLSc	23
Basic Science Undergraduate Course	24
Graduate Studies	25
Residency Program	26
Continuing Professional Development	27
Special Yearly Events	28

RESEARCH

Research Awards by Source	31
Personnel Awards	32
Publications	33

REVENUES & BUDGET

Revenues & Budget	35
-----------------------------	----

A Message from The Acting Head

C. Blake Gilks, MD FRCPC



The Department of Pathology and Laboratory Medicine at the University of British Columbia is a very large and diverse department. One might reasonably ask why we exist as a department, as many of us have very close ties to our home research institute on one hand, and other departments at UBC on the other. The definition of pathology, as “the study of disease”, is not helpful in understanding our status as a department, as much of the research in the medical school could be said to be based on “the study of disease”; the Department of Pathology and Laboratory Medicine is not the home for all or even most “pathology” research done at UBC. I believe that understanding our existence as a department is best done through considering the three educational programs run by our Department, namely (and in no particular order) the residency, graduate studies, and BMLSc programs.

Like the Departments of Surgery and Medicine, the Department of Pathology and Laboratory Medicine hosts residency training programs that allow graduates to take fellowship examinations and, if successful, practice as specialists thereafter. There are six specialties recognized by the Royal College of Physicians and Surgeons of Canada. These residency training programs, consisting of 5 years of preparation that

entails exposure to clinical and laboratory medicine, could theoretically be offered in a community hospital setting. To be truly effective at training the next generation of laboratory physicians, however, they must be affiliated with a university, with its complement of dedicated teachers and researchers. So one aspect of our department is support of these clinical training programs. The residency training programs of our department are highly regarded nationally and internationally, and produce a mix of graduates who work in community practice and large hospitals, and as faculty at universities throughout North America.

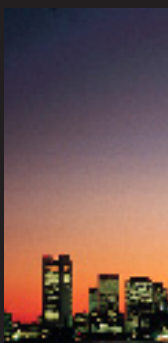
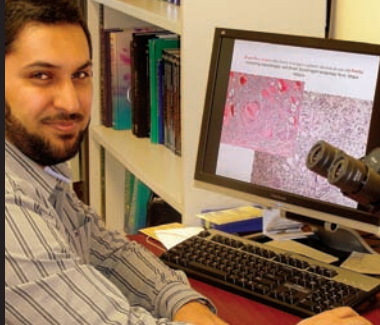
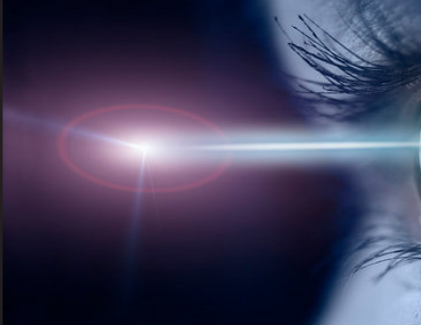
With the phenomenal growth of biomedical research over the past 50 years, there has been an increasing demand for individuals with advanced degrees in related fields. The graduate studies program has grown steadily, and as it has done so, the range of career choices open to our graduates has also broadened. Many graduates go on to become academic researchers, but may also follow career paths in teaching, industry, government and elsewhere. While research is increasingly conducted at institutes such as the MacDonald Research Laboratory, British Columbia Cancer Research Centre, the various laboratories within Vancouver Coastal Research Institute, BC Center for Disease Control, Child and Family Research Institute, Canadian Blood Research Centre, etc. students do not receive their graduate degrees from these institutes, but from the University of British Columbia. High standards are in place campus-wide,

A Message from The Acting Head cont...

ensuring that applicants will receive a first class educational experience. We are fortunate that even as the program has expanded over the past decade, the reputation of the program continued to rise.

The Bachelor of Medical Laboratory Science program has also grown dramatically since the first small classes graduated in the early 1980s. Teaching of the third and fourth year undergraduate program is carried out by basic science and clinical faculty alike. The unique grounding provided through the BMLSc program allows graduates to move into a variety of careers, including biomedical research, and many of us work closely with graduates of the program at all of the research institutes mentioned above. A significant number go on to graduate studies, at UBC or elsewhere. Entry to medical school is an increasingly popular option for graduates of the program and this year we have three BMLSc graduates joining the residency training program, having successfully completed medical school.

The success of these educational programs is, of course, dependent on excellence in research and clinical service. It is this unique combination of clinical medicine and basic research that defines our department, and positions us at the interface of discovery and patient care.

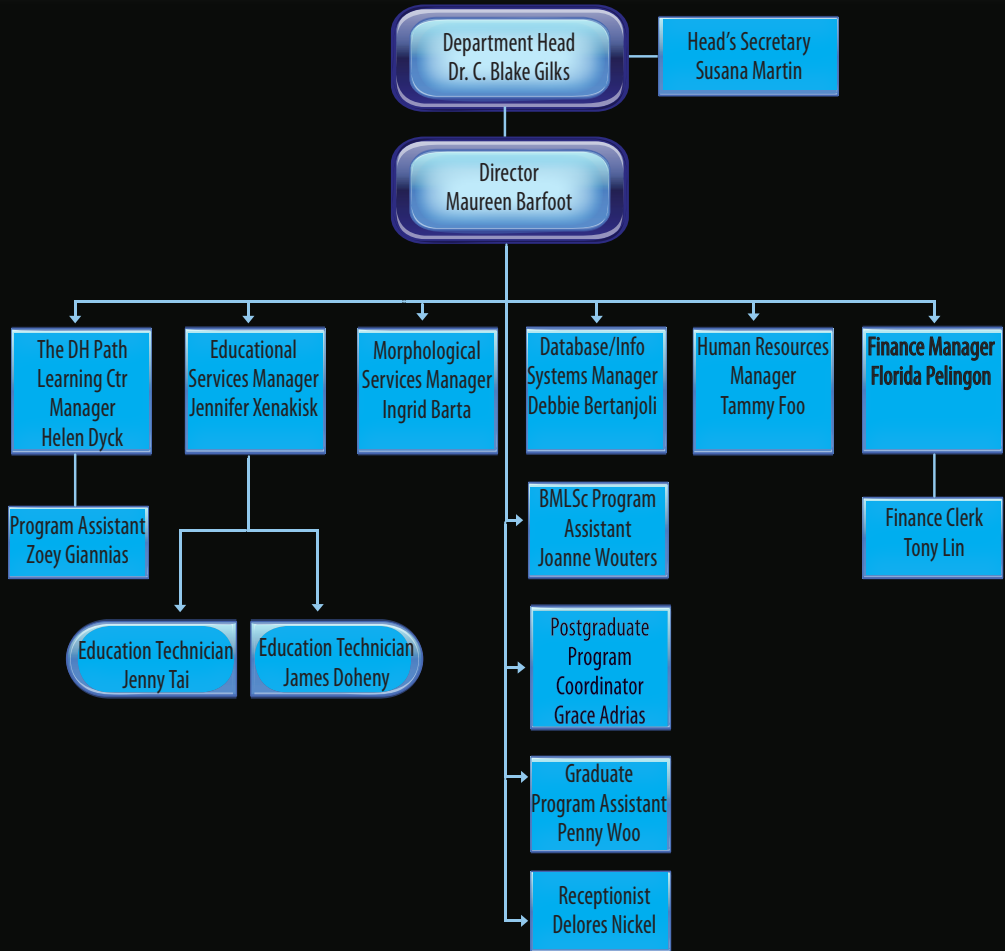


1

ORGANIZATION

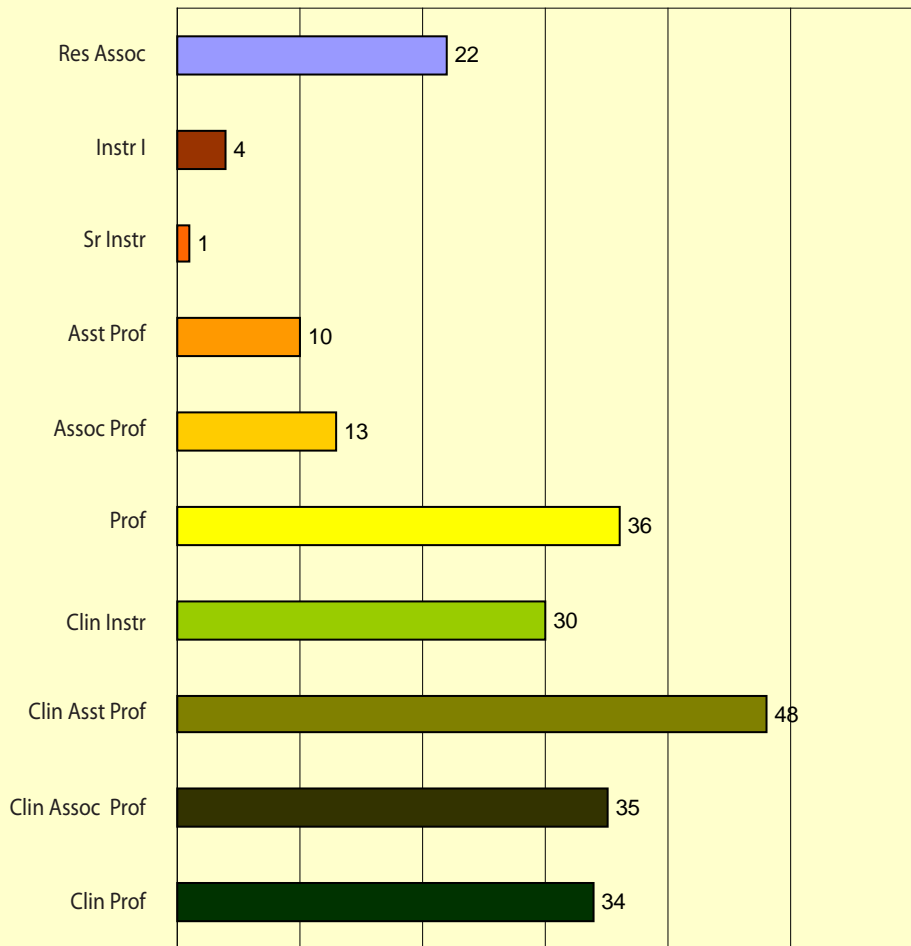
Section I

Organizational Chart



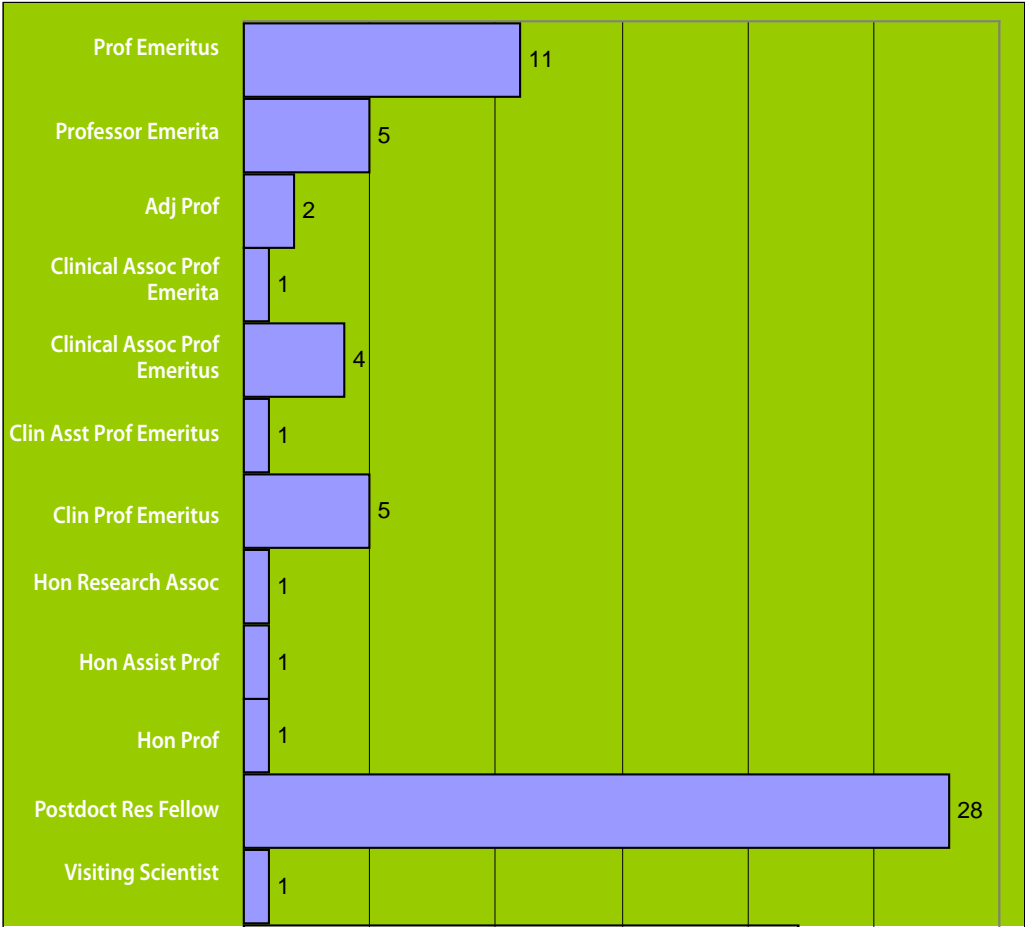
Faculty

•TOTAL: 240



Faculty

•TOTAL: 50



11

Degrees: MD & PhD



163

124

19

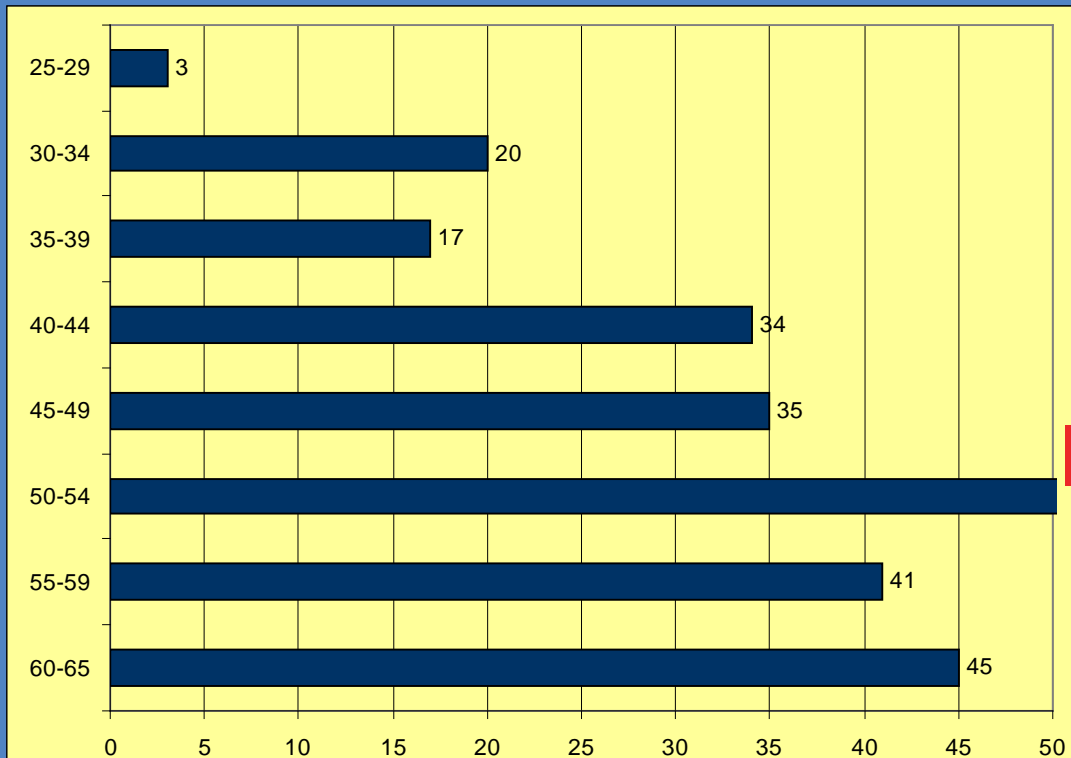
MD

Phd

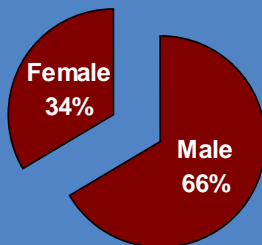
MD+PhD

Faculty by Age

Age Group



13





Employee Groups

Clinical Faculty	166
Academic Faculty	63
Postdoctoral Research Fellows, Research Associates & visitors	77
Secreterial/Clerical (CUPE 2950)	9
Management/Professional	15
Non-Union Technician & Research Assistants	74



Geographic Sites

- a) BC Children's Hospital
- b) BC Women's Hospital
- c) Lion's Gate Hospital
- d) Prince George General Hospital
- e) Richmond General Hospital
- f) Royal Columbian Hospital
- g) Royal Jubilee Hospital
- h) St. Paul's Hospital
- i) Sunny Hill Health Centre for Children
- j) UBC Hospital & Urgent Care Centre
- k) Vancouver General Hospital
- l) Victoria General Hospital

Affiliation with UBC Research Institutes & Centres

A) Providence Health Care Research Institute

- i) BC Centre Of Excellence For HIV/AIDS
- ii) James Hogg iCAPTURE Centre For Cardiovascular And Pulmonary Research
- iii) Healthy Heart Program / Lipid Clinic
- iv) Centre For Health Evaluation And Outcome Sciences

B) BC Cancer Research Centre

- i) Advanced Therapeutics
- ii) Cancer Control Research
- iii) Cancer Endocrinology
- iv) Cancer Genetics
- v) Developmental Biology
- vi) Cancer Imaging
- vii) BC Cancer Agency's Trev & Joyce Deeley Research Centre

- viii) BC Cancer Agency's Michael Smith Genome Sciences Centre
- ix) Medical Biophysics
- x) Molecular Oncology and Breast Cancer Program
- xi) Terry Fox Laboratory
- xii) Tumour Tissue Repository
- xiii) Prostate Cancer Research Program
- ix) Centre for Translational and Applied Genomics

C) British Columbia Centre for Disease Control (BCCDC)

- i) UBC Centre for Disease Control

D) Vancouver Coastal Health Research Institute

- i) Jack Bell Research Centre - Hosts collaboration GPEC group
- ii) Skin Care Centre
- iii) Arthritis Centre
- iv) Eye Care Centre
- v) The Prostate Centre

vii) BRAIN Research Centre

viii) International Science of Soft Surfaces & Interfaces Project

ix) Centre for Blood Research

x) CFI Laboratory for Molecular Biophysics

xi) Genetic Pathology Evaluation Centre

E) Child & Family Research Institute (CFRI)

i) Centre for Microbial Diseases & Host Defense Research

ii) Centre for Molecular Medicine and Therapeutics (CMMT)

iii) Centre for Nutrition Research

iv) Centre for Growth and Development

v) Centre For Community Health And Health Evaluation

vi) Centre For Community Child Health Research

vii) BC Injury Research And Prevention Unit

viii) Clinical Research Support

ix) The New Translational Research Building



Assignable Space (sq ft)

Department Assignable Space (sq ft)				
Site	Office	Wet Lab	Other	Total
C & W	1375.85	4183.75	1589.24	7148.84
St. Paul's Hospital	1846.60	290.60	1951.10	4088.30
UBC Hospital	3002.09	6518.30	4989.56	14509.95
VGH	1222.19	3064.66	4081.35	8368.20
Total	7446.73	14057.31	12611.25	34115.29

2

EDUCATION

Section 2

Medical Undergraduate Pathology Teaching

	# of Instructors	# of Hours	# of Students
Lectures	36	62	542
CPC- Large Group	26	78	542
CPC – small group	70	396	542
PBL/DPAS	23	176	542
Electives and selectives	N/A	N/A	25

Bachelor of Medical Laboratory Science Program

Number of Students	46
BMLSc program courses	14
Instructors (Faculty, technologists, others)	71
Lecture hours	679
Other types of Instruction - hours	244

Basic Science Undergraduate Course

Course	# of credits	# of students
Path 375 –Intro Pathology	3	148
Path 417- Bacterial infections	3	24
Path437/Micb407	3	29
Path 427 - Basic Principles of Infection Control	3	32
Path 451 - Clerkship in Laboratory Medicine and Infection Prevention and Control	3	13
Path 467 - Basic Microbiology for Infection Control	3	17
Path 477 - Basic Epidemiology for Infection Control	3	14
Total	21	277

Graduate Studies

Program of study	Students
Masters	29
PhD	54
MD/PhD	3
Total	86
# of supervisors	46



Residency Programs

Program	Residents
Anatomic Path/ General Path	12
Clinical Biochemistry	3
Medical Microbiology	4
Hematopathology	5
Neuropathology	2
PGY1	6
Transfusion Medicine	1
Total	41
Clinical Fellows	3



Continuing Professional Development

Program	# of participants
Diagnostic Immunohistochemistry (April 2009)	150
Laboratory Quality Control	85
Infection Control Certificate	58
BC Cytology Day (May 2009)	70
Total	363

Special Yearly Event

PATHOLOGY DAY 2008

Keynote speakers:

The James Hogg Keynote Lecturer was Dr. Deborah Nickerson, Professor of Genome Sciences, Adjunct Professor of Bioengineering, University of Washington. Her talk was titled "*Genome-Wide Quantitative Trait Analysis*". Over 150 people attended this presentation.

oral presentations by residents/trainees and graduate students	11
# of posters	63

28

Awards for Best Oral Presentations:

1st place: Tony Ng

"High-throughput identification of suppressors of anoikis reveal a possible role of the arrestin-domain containing gene family"

2nd place: Jefferson Terry

"Isolation of putative cancer stem-like cells in synovial sarcoma"

3rd place: Cheng-han Lee

"Molecular characterization of 31 novel sarcoma cell lines"



3rd place: Tie between

Ivy Tsui

"Clonal evolution of the multi-focal development of oral carcinogenesis"

Meredith Hamilton

"Role of the toll-like receptor signaling molecule TRIF in b-cell function"

2nd. place: Peyman Tavassoli

"TATA binding protein associated factor 1 (TAF1) can bind and differentially enhance androgen receptor transcriptional activity via ubiquitin activating/conjugating and N-Terminal Kinase Domains"

1st place: Ciara Chamberlain

"Granzyme B contributes to aortic dissection and aneurysm pathogenesis through the cleavage of extra cellular matric proteins"

Faculty Recognition and Awards:

Excellence in Education Award: **Dr. Jason Ford**

Award for Excellence in Service: **Dr. Brian Skinnider**

Excellence in Research and Discovery: **Dr. Wan Lam**

Lifetime Achievement Award: **Dr. Bruce McManus**

Most Valuable Player Award: **Dr. Carol Parks**

The Staff Service Award for Excellence: **Ms. Joanne Wouterse**



3

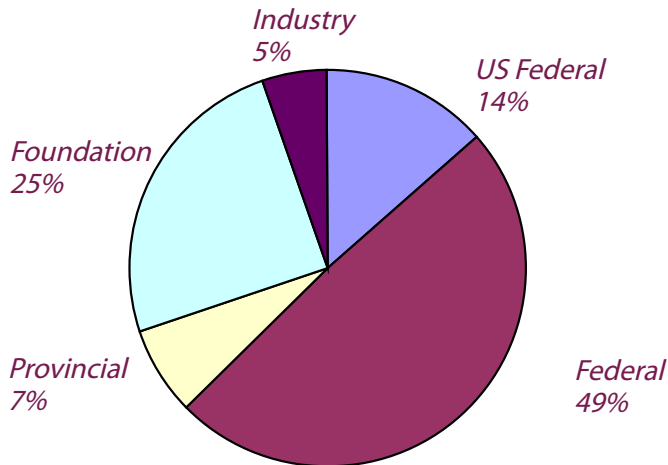
RESEARCH

Section 3

Research Grant Funding Sources

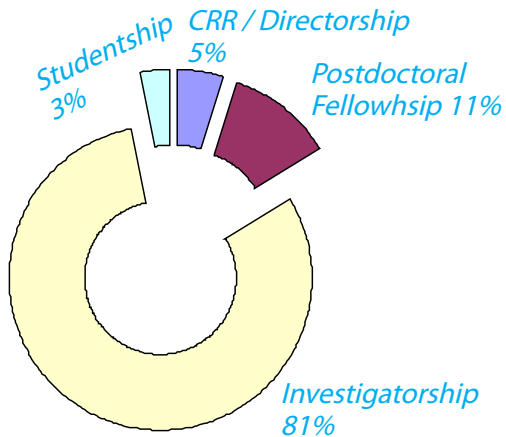
F / Y 2008-2009

Research Awards Funding Sources (\$)	
US Federal	\$3,120,531.00
Federal	\$11,319,465.00
Provincial	\$1,643,155.00
Foundation	\$5,763,887.00
Industry	\$1,218,445.00
Total	\$23,065,483.00



Personnel Awards 2008-2009

Personnel Awards (\$)	
CRC/Directorship	\$100,000.00
Postdoctoral Fellowship	\$233,471.00
Investigatorship	\$1,654,239.00
Studentship	\$64,374.00
Total	\$2,052,084.00



Publications

2008-2009



Published Work	
Refereed/Non-refereed Publications	420
Conference Proceedings/ Abstracts	220
Books	32
authored	2
chapters	30
Patents	9

4

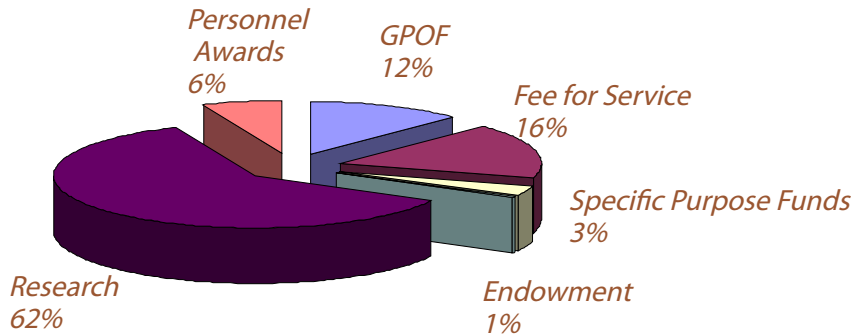
REVENUES & BUDGET

Section 4

Department Funds

2008-2009

Funds (\$)	
General Purpose Operating Fund	\$4,063,641.00
Fee for Service	\$5,508,962.00
Specific Purpose Funds	\$963,123.00
Endowment	\$201,987.00
Research	\$21,013,399.00
Personnel Awards	\$2,052,084.00
Total	\$33,803,196.00





G227 - 2211 Wesbrook Mall
Vancouver, BC V6T 2B5
tel 604-822-7102; fax 604-822-9703
www.pathology.ubc.ca