

PATHOLOGY AT A GLANCE

2012 - 2013





Last year, thanks to our performers, artists and volunteers, we raised \$1,500 for Arts Umbrella and put on a wonderful show of music, stories and dance.



PATHOLOGY ARTS GALA - FRIDAY, JUNE 14, 2013

PATHOLOGY ARTS

arts**UMBRELLA**[™]

come
together

The 2013 Pathology Arts Gala is a night to celebrate performers and artists in the Department of Pathology and Laboratory Medicine. On this night, hard-working scientists and staff in our department have the opportunity to showcase their artistic talents in the presence and support of their peers. This gala also serves to raise money for Arts Umbrella, a not-for-profit arts education centre for young people ages 2-19 with an aim to make arts education available to youth regardless of their socio-economic standing.

This year the Gala will be held on Friday, June 14, 2013 at MSAC (the UBC Medical Students & Alumni Centre) on Heather and 12th Ave.

From Kevin Tsai (PhD Program)

Contents

ORGANIZATION

A Message from the Head	4
Org Chart	6
Faculty and Staff	8
Faculty by Medical Programs.	12
FOM/UBC and External Awards	13
UBC Affiliated Clinical Academic Facilities . . .	16

EDUCATION

Medical Undergraduate Teaching	19
BMLSc	20
Undergraduate Course	21
Graduate Studies	22
Residency Program.	23
Continuing Professional Development	24
Special Yearly Event	25

RESEARCH

Research Awards Funding Sources	28
Personnel Awards.	29

REVENUES & BUDGET

Department Funds	31
----------------------------	----

A Message from The Head

Michael F. Allard BSc MD FRCPC



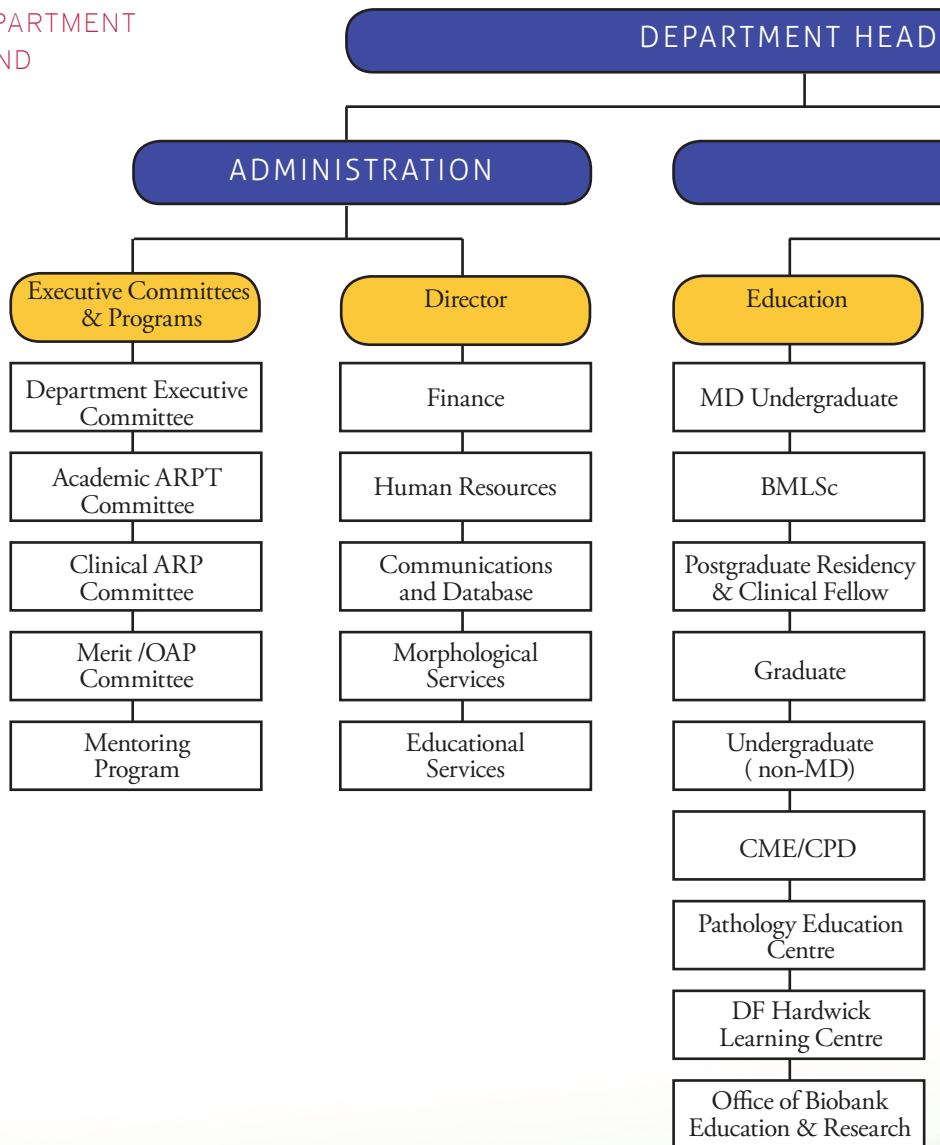
The Department of Pathology and Laboratory Medicine at UBC is a hybrid, academically intensive Department within the UBC Faculty of Medicine whose activities span a broad spectrum of teaching, research, and academic service, often performed in the milieu of clinical practice, and are ultimately devoted to improving the care, treatment, and well-being of patients. A characteristic feature common to all these activities is knowledge, with members of our department playing a foundational role in the pathway of knowledge from its creation to its integration, dissemination, application, and interpretation. This role can readily be appreciated by reflection upon specific activities and accomplishments by our department and its members. As practicing physicians and laboratory scientists, specialists in pathology and laboratory medicine are intimately involved in patient care providing critical diagnostic, interpretive, and consultative support to clinical programs at UBC affiliated health care facilities and are recognized for their expertise regionally and provincially as well as elsewhere in Canada and the world. In addition, the department is the academic home to many of British Columbia's premier investigators working in basic, translational, and clinical research facilities affiliated with UBC.

The UBC Department of Pathology and Laboratory Medicine offers academic degree programs at the bachelor's (Bachelor of Medical Laboratory Science (BMLSc)) and graduate (MSc, PhD) levels and provides or participates in undergraduate and graduate educational programs for students enrolled in other departments, faculties, and schools. The department also plays a major role in professional education, including, undergraduate education of physicians, dentists, and allied health professions; accredited residency (post-graduate) training programs of the Royal College

of Physicians and Surgeons of Canada; and continuing professional development and education. Members of the department participate in activities that span the entire spectrum of research and scholarly work. A cadre of individuals, many of whom are also pathologists and laboratory physicians (i.e., clinician scientists), performs basic investigative research into the fundamental causes and mechanisms of disease. Others are at the forefront of translating discoveries generated during basic research investigations into clinical practice by a process of robust adaptation, implementation, and validation. Department members also make significant and important clinical research contributions that lead to advances in our understanding of disease and to critical evaluation of novel therapeutic interventions, while still more are active in the scholarship of education developing innovative ways of teaching pathology and laboratory medicine to both trainees and practitioners.

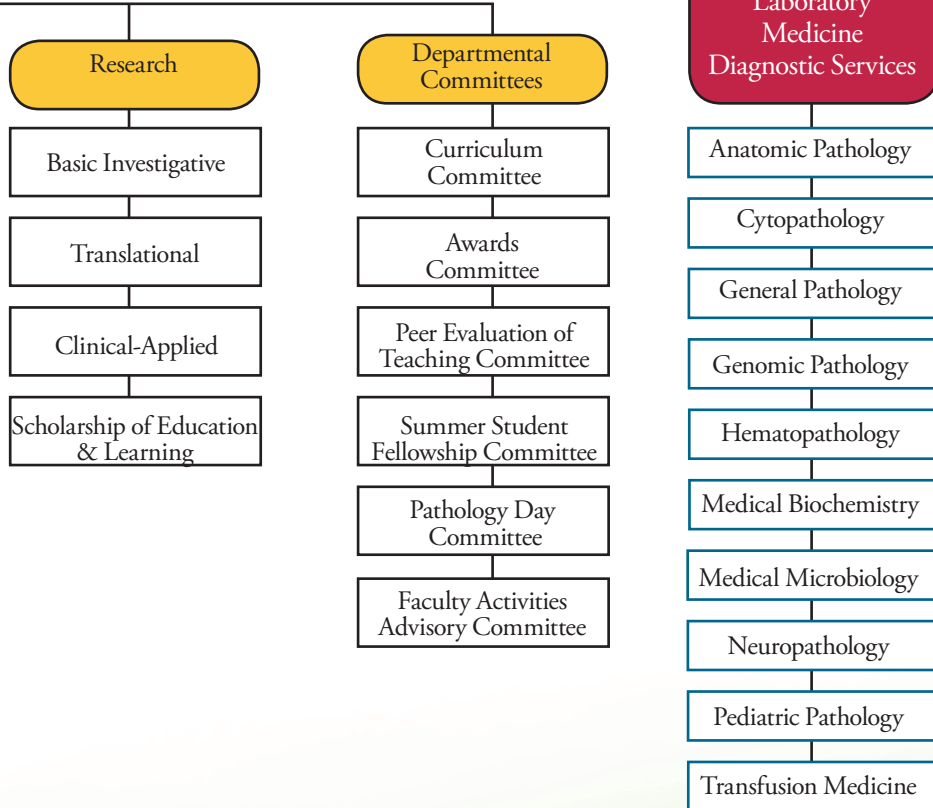
Faculty members and administrative staff of the department are also extremely active in academic services of the department, the Faculty of Medicine, and external academically oriented organizations and, in many instances, hold key leadership positions. Leadership and involvement in academic service, which is often not fully appreciated for its importance, provide essential support for all departmental activities and serves as a key enabling function. Over the years, members of the department have been recognized for their accomplishments, contributions, and excellence across the spectrum of clinical, academic, and service activities. This year is no exception with department members being deservedly recognized for their accomplishments and contributions spanning the entire spectrum of departmental activities highlighting the overall broad-based excellence of our department and its faculty, trainees, and staff and indicating that we should not only be very proud but also be encouraged by demonstrating what can be accomplished.

OVERVIEW OF DEPARTMENT
OF PATHOLOGY AND
LABORATORY
MEDICINE
ORGANIZATION



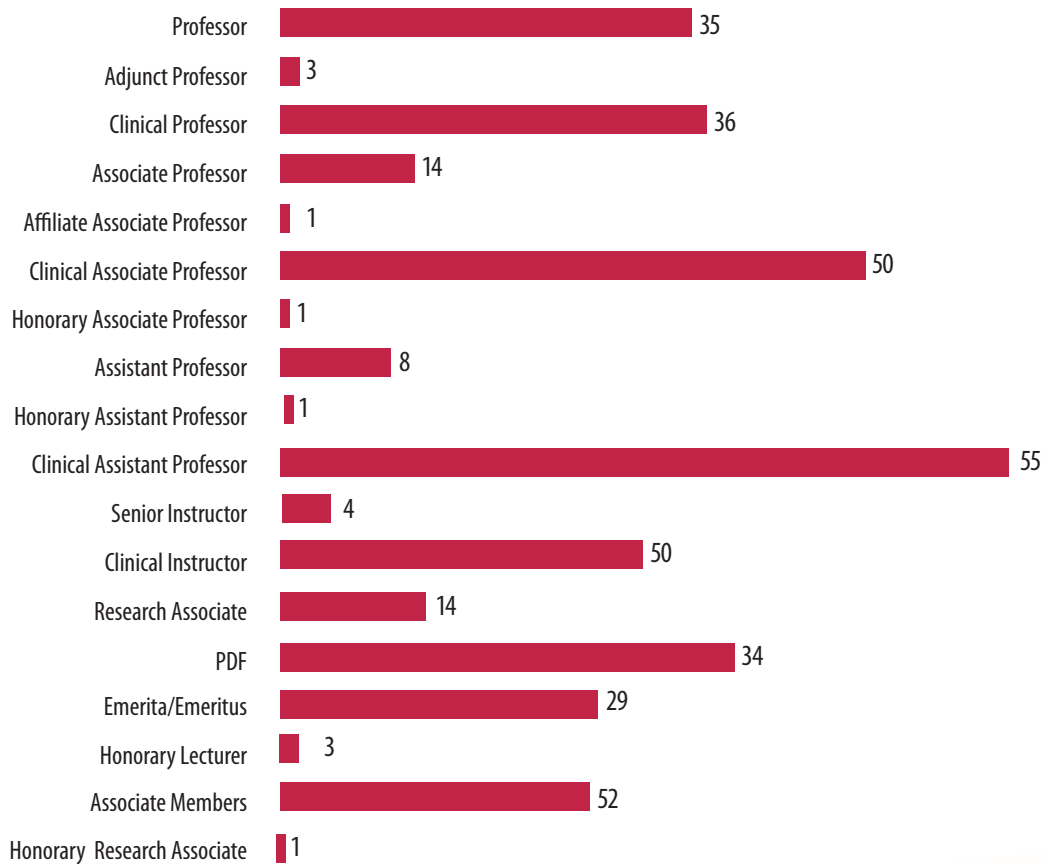


ACADEMIC PROGRAMS



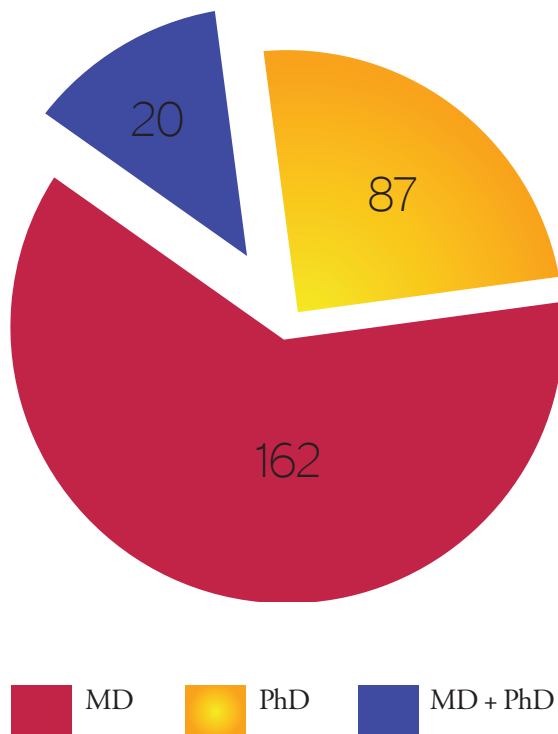
FACULTY BY RANK

Total: 339 (excluding Associate Members)



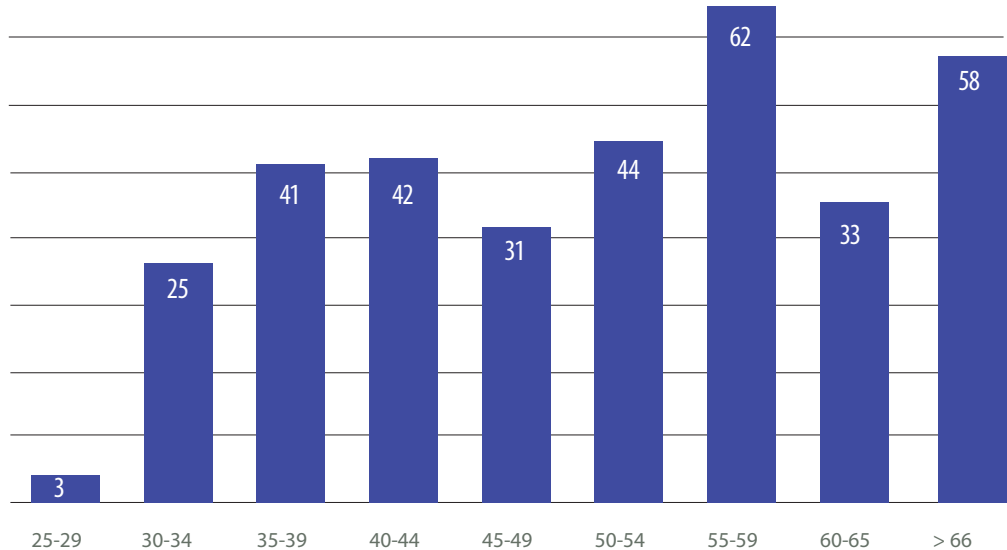
DEGREES: MD & PhD

Excluding Emerita/Emeritus and Associate Members



FACULTY BY AGE GROUP

Total: 339 (excluding Associate Members)



EMPLOYEE GROUPS

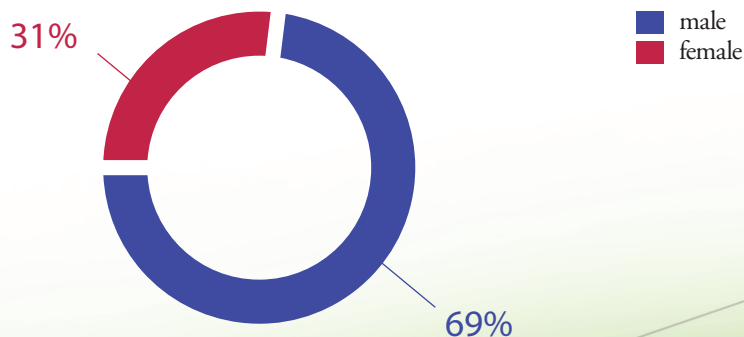
2012-2013

Clinical Faculty	191
Academic Faculty	65
Postdoctoral Research Fellows, Research Associates & Visitors	48
Emerita/Emeritus	29
Honorary	6
Secreterial/Clerical (CUPE 2950)	11
Management/Professional	19
Non-Union Technicians & Research Assistants	62
Non-Union Students	48

11

PERCENTAGE OF FACULTY MEMBERS BY SEX

Excluding Associate Members



FACULTY BY MEDICAL PROGRAMS

Excluding Emerita/Emeritus and Associate Members

	# of faculty members
VGH	49
St. Paul's Hospital	47
Children's & Women's Health Centre of BC	33
BC Cancer Agency, Vancouver Centre	28
UBC Hospital	26
BC Cancer Research Centre	25
Royal Jubilee Hospital	14
Royal Columbian Hospital	12
Child & Family Research Institute	12
BC Centre for Disease Control	11
Centre for Blood Research	8
Community (Vancouver Coastal Health Authority)	6
Kelowna General Hospital	6
Prince George Regional Hospital	4
Surrey Memorial Hospital	4
BC Cancer Agency, Fraser Valley Centre	3
Community (Provincial Health Services Authority)	3
BC Cancer Agency, Vancouver Island Centre	2
Community (Fraser Health Authority)	2
Community (Vancouver Island Health Authority)	2
Royal Inland Hospital	2
Vernon Jubilee Hospital	1
BC Cancer Agency, Centre for the Southern Interior	1
Biomedical Research Centre	1
Burnaby Hospital	1
Centre for Molecular Medicine & Therapeutics	1

of faculty members

Community (Northern Health Authority)	1
Fort St John Hospital & Health Centre	1
Genomics & Network Analysis (GeNA) Lab, SFU	1
Kootenay Boundary Regional Hospital	1
Victoria General Hospital	1
Wrinch Memorial Hospital	1

FOM/UBC AND EXTERNAL AWARDS

Aparicio, Samuel, Professor	UBC Killam Research Prize 2012
Ford, Jason, Associate Professor	UBC Medical Undergraduate Society Teaching Excellence Award – Class of 2013
Gascoyne, Randy, Clinical Professor	Killam Research Prize
Granville, David, Associate Professor	2012 World Association of Co-Operative Education Award
Huntsman, David, Professor	Killam Research Prize
Huntsman, David, Professor	Karen Campbell Award for Research Ovarian Cancer Canada
Isaac-Renton, Judith, Professor	John G. Fitzgerald – CACMID Outstanding Microbiologist Award
Krajden, Mel, Professor	Queen's Diamond Jubilee Medal
Ling, Victor, Professor	Queen Elizabeth II Diamond Jubilee
Ling, Victor, Professor	Marks Brother Lectureship University of Indiana

FOM/UBC AND EXTERNAL AWARDS CONT'D

Magil, Alexander, Professor	BC Renal Agency Wilma Crockett Award
McManus, Bruce, Professor	Aubrey J. Tingle Prize
McManus, Bruce, Professor	Milton Wong Leadership Award
McManus, Bruce, Professor	Alumni Achievement Award
Mel, Kraiden, Professor	Queen Elizabeth II Diamond Jubilee Medal
Nielsen, Torsten, Professor	UBC Killam Research Prize 2012
Noble, Michael, Professor	Outstanding Service
O'Kusky, John, Associate Professor	Service Award for long term contribution (28 years)
Petric, Martin, Professor Emeritus	Canadian College of Microbiologists Distinguished Service Award
Roscoe, Diane, Clinical Professor	AMMI Canada Distinguished Service Award
Steidl, Christian, Assistant Professor	Career Investigator Award, Scholar
Wadsworth, Louis, Professor	Clinical Faculty Award for Career Excellence in Clinical Teaching
Wellington, Cheryl, Professor	Simon Pierre Noel Award
Weng, Andrew, Associate Professor	Governor General's Research Award
Wouterse, Joanne, BMLSc Program Assistant	Applegarth Staff Service Award
Wright, Joanne, Professor	Reviewer of the year award

DEPARTMENT ASSIGNABLE SPACE

(sq ft)

Site	Office	Wet Lab	Other	Total
C & W	1375	4183	1589	7148
St. Paul's Hospital	18460	290	1951	4088
UBC Hospital	3002	6518	4989	14509
VGH	1222	3064	4081	8368
Total	7446	14057	12611	34115

UBC AFFILIATED CLINICAL ACADEMIC FACILITIES

2012-2013

Clinical Academic Campuses

BC Children's and Women's Hospital

BC Cancer Agency-Vancouver

Vancouver General Hospital and related facilities

St. Paul's Hospital

Royal Columbian Hospital

Surrey Memorial Hospital

Royal Jubilee Hospital

Victoria General Hospital

Kelowna General Hospital

University Hospital of Northern BC

Affiliated Regional Centres

Lion's Gate Hospital

Richmond Hospital

Abbotsford Regional Hospital and Cancer Centre

Chilliwack General Hospital

Royal Inland Hospital, Kamloops

Vernon General Hospital

Penticton General Hospital

Nanaimo Regional Hospital

Island Affiliated Regional Centres (Campbell River, Comox, Duncan)

Community Education Facilities

Burnaby General Hospital

UBC Affiliated Research Institutes

Child and Family Research Institute

Providence Health Care Research Institute

Vancouver Coastal Research Institute

Life Sciences Institute

UBC Affiliated Research Centres

Biomedical Research Centre

Brain Research Centre

Centre for Blood Research

Centre for Molecular Medicine and Therapeutics

ICORD

UBC Centre for Disease Control

UBC James Hogg Research Centre

Vancouver Prostate Centre

2

EDUCATION

section 2

MEDICAL UNDERGRADUATE TEACHING

2012-2013

Years 1&2	# of Instructors	# Hours	# Students
Lectures	40	108	336/300
Small Group CPC	70	433	Groups of 10-32
PBL Contribution	17	686	Groups of 8
Year 4	# of Students	# Weeks	
Electives/Selectives	28		88

BACHELOR OF MEDICAL LABORATORY SCIENCE PROGRAM

2012-2013

Number of Students	39
BMLSc Program Courses	14
Instructors (Faculty, Technologists, Others)	86
Lecture Hours	1067
Other types of Instruction - hours	250

UNDERGRADUATE COURSES

2012-2013

Course	# of Credits	# of Students
Path 375 –Intro Pathology	3	51
Path 417- Bacterial infections (may be taken as 3 credits with instructor permission)	3	16
Path437/Micb407	3	22
Path 427 - Basic Principles of Infection Control	3	29
Path 451 - Clerkship in Laboratory Medicine and Infection Prevention and Control	3	3
Path 467 - Basic Microbiology for Infection Control	3	18
Path 477 - Basic Epidemiology for Infection Control	3	18
Total	21	157

GRADUATE STUDIES

2012-2013

Program of Study	Students
Masters	31
PhD	48
MD/PhD	3
Total	82
# of Supervisors	42

22

Course Coordinators	
Medi 560/Path 518B Pulmonary Pathophysiology	Najib Ayas
Medi 521/Path 531 Molecular and Cell Biology of Cancer	Gregg Morin
Medi 570/Path 570 Cardiovascular Pathophysiology	Honglin Luo
Path 500 part 1 Histopathology	Haydn Pritchard
Path 500 part 2 Critical Thinking	Haydn Pritchard, Kevin Bennewith, Christian Steidl
Path 521 Introduction to the Pathogenesis of Human Disease	Andrew Sandford
Path 530 Nutrition and Metabolic Aspects of Human Disease	Angela Devlin
Path 535/635 Graduate Seminar Series	Helene Cote (<i>main coordinator</i>), Jacquie Quandt, Marianne Sadar
Path 548Q (Directed Studies) Human Pathology	Julia Flint
Path 548C (Directed Studies) Diabetes	Jaki Chantler
Path 548K (Directed Studies) Hemostasis Biochemistry	Ed Pryzdial

RESIDENCY PROGRAM

2012-2013

Program of Study	Residents
Anatomical Pathology / General Pathology	26
Neuropathology	4
Hematopathology	7
Medical Microbiology	5
Medical Biochemistry	3
Transfusion Medicine	2
Fellows	6

CONTINUING PROFESSIONAL DEVELOPMENT

The Pathology Professional Advancement Learning Series is a self-approved group learning activity (Section1) as defined by the Maintenance of Certification program of the Royal College of Physicians and Surgeons of Canada.

Professional Advancement Learning Series (PALS)	2012
Is your presentation legal? [Joy Kirchner]	Feb 10, 2012
Biobanking and Pathology [Dr. Peter Watson]	Mar 2, 2012
Is it publish and perish? A discussion of the avian flu ferret experiments [Dr. Martin Petric]	Apr 13, 2012
Portfolios in action: part of your future resume.... and yes, you will need one!!! [Dr. Patrick W. Doyle & Dr. Niamh Kelly]	Jun 1, 2012
Dissecting social media and its impact on Pathology [Daniel Hooker]	Sep 21, 2012
Creating your professional cv: are you really a wolf but in sheep's clothing? [Dr. Ken Baimbridge, Dr. Janice Eng & Simon Dee]	Oct 19, 2012
The Learner - what sort of a learner am / are you? [Dr. Niamh Kelly]	Nov 16, 2012
Tips for Teaching... and the big mistakes you can avoid! [Dr. Jason Ford]	Dec 14, 2012

SPECIAL YEARLY EVENT

Pathology Day 2012

James Hogg Lecture

Dr. Katerina Dorovini-Zis, Professor, Department of Pathology & Laboratory Medicine
“Cerebral Malaria in Children: A Neurovascular Disorder”

Pathology Day Keynote Lecture

Dr. Marco Marra, Professor, Medical Genetics, UBC & Director, BC Cancer Agency Genome Sciences Centre
“Decoding Cancers”

of oral presentations 24 # of posters: 36

25

THE SCIENCE BYTES SESSION:

People's Choice Award selected by all attendees:	Hayley Spencer Hiebert
--	------------------------

Science Bytes' Honorable Mention Recipients:	Daven Tai, Stefanie Cheah and Deanna Zanet
--	--

RESIDENT ORAL PLATFORM PRESENTATIONS:

1st Place:	Jason Morin
------------	-------------

2nd place:	Patrick Wong
------------	--------------

3rd place:	Ananta Gurung
------------	---------------

GRADUATE STUDENT ORAL PLATFORM PRESENTATIONS:

1st place:	Ashish Marwaha
2nd place:	Alon Hendel
3rd place:	Yu Chi (Kevin) Yang

POSTER PRESENTATION AWARD WINNERS:

1st place:	Jaques Courtade
2nd place:	Sophie Stukas
3rd place:	Alistair Chenery

FACULTY RECOGNITION AWARDS:

Most Valuable Player	Dr. Jason Ford
David Hardwick Lifetime Achievement	Dr. Katerina Dorovini-Zis
Excellence in Research and Discovery	Dr. Randy Gascoyne
Excellence in Education	Dr. Deborah Griswold
Excellence in Service	Dr. Malcolm Hayes
Staff Service Award in the Technologist/Technician Category	Ms. Angela Tsang
Staff Service Award in the Administration Category	Ms. Jennifer Xenakis



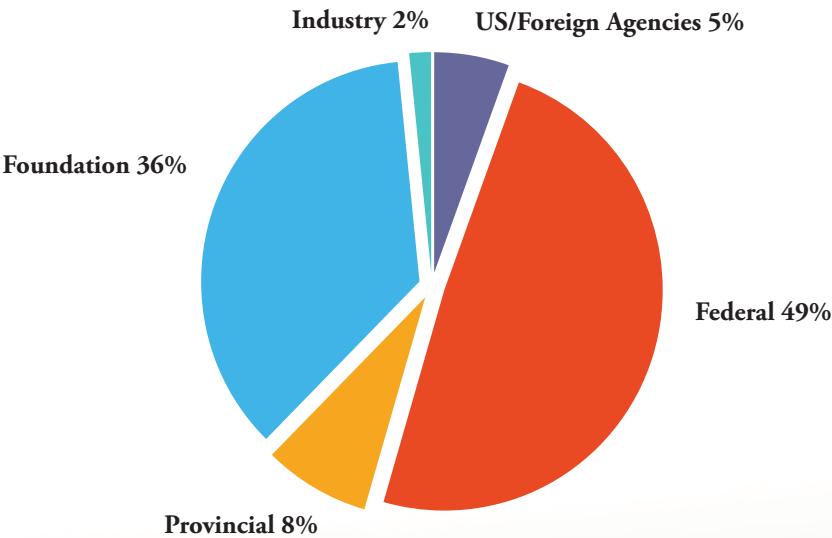
3

RESEARCH

section 3

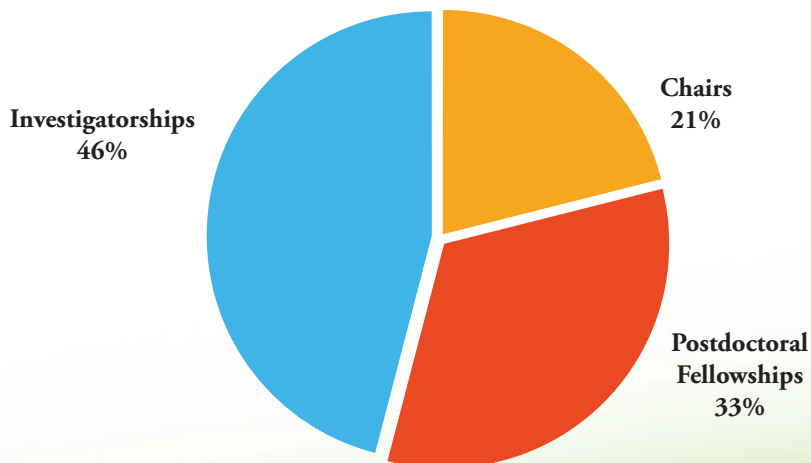
RESEARCH GRANT FUNDING SOURCES

F/Y 2012-2013	Description	Amount
US/Foreign Agencies	Funds from US institution i.e. DOD , JDRF	\$763,020.38
Federal	Funds from Canadian federal gov't i.e. Tri-Council	\$6,747,609.57
Provincial	Funds from provincial government i.e. Genome BC, the Province of BC, MSF	\$1,086,524.33
Foundations	Funds from non-profit organization i.e. BC Cancer Foundation, CFRI, MS Society, Terry Fox Fdn, VGH Fdn	\$4,964,124.05
Industry	Funds from private companies	\$221,666.70
Total		\$13,782,945.03



PERSONNEL AWARDS

F/Y 2012-2013	Description	Amount
Chairs	Salary awards from chairs i.e. CRC, Johal	\$450,307.00
Postdoctoral Fellowships	Salary awards for postdoc fellows from various granting agencies	\$705,539.21
Investigatorships	Salary award for faculty members from various granting agencies	\$982,892.00
Total		\$2,138,738.21



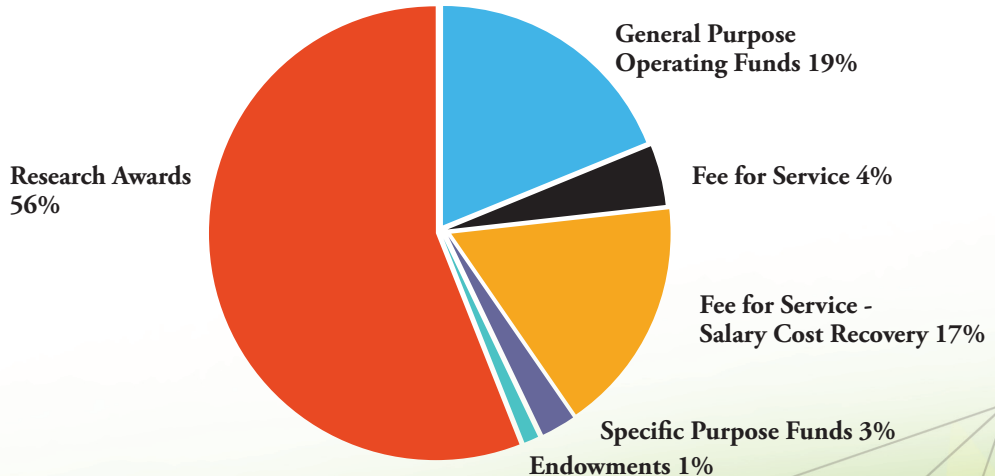
4

REVENUES & BUDGET

section 4

DEPARTMENT FUNDS

F/Y 2012-2013	Description	Amount
General Purpose Operating Funds	Budget from Faculty of Medicine and other unrestricted funds from various sources	\$4,629,673.97
Fee for Service Funds	Funds recovered for use of facilities & services	\$1,087,128.15
Fee for Service - Salary Cost Recovery	Funds recovered for salaries by bill back arrangement with partner institutions	\$4,223,177.95
Specific Purpose Fund	Funds from contracts and agreements	\$617,404.89
Endowment Funds	Funds generated from endowed capital	\$265,790.57
Research Awards	Funds awarded to individuals or groups from various research granting agencies	\$13,782,945.03
Total		\$24,606,120.56



HEAD OFFICE

University of British Columbia
Rm. G227 - 2211 Wesbrook Mall
Vancouver, BC V6T 2B5

T. (604) 827-3688
Fax (604) 822-9703

INTERNET

web www.pathology.ubc.ca

SOCIAL NETWORK

on Twitter - @ubcpathology
on Facebook - Pathology and Laboratory Medicine



a place of mind

THE UNIVERSITY OF
BRITISH COLUMBIA

